

Bonhams



California Jewels

Los Angeles | December 17 and 18, 2018



California Jewels

Los Angeles | Monday December 17 & Tuesday December 18, 2018, at 10am

BONHAMS

7601 West Sunset Blvd,
Los Angeles, CA 90046
bonhams.com

SALE

Day 1: December 17
Lots: 1 - 245

Day 2: December 18
Lots: 246 - 488

PREVIEW

Los Angeles

Thursday December 13,
12pm to 5pm
Friday December 14,
12pm to 5pm
Saturday December 15,
12pm to 5pm
Sunday December 16,
12pm to 5pm

SALE NUMBER:

25097

CATALOG:

\$35.00

ILLUSTRATIONS

Front cover: Lots 92, 104, 484
Inside front cover: Lot 78
Inside back cover: Lot 337
Back cover: Lot 92

BIDS

+1 (323) 850 7500
+1 (323) 850 6090 fax
Email: bids.us@bonhams.com
To bid via the internet please visit
www.bonhams.com

Telephone bidding

Bidding by telephone will only
be accepted on a lot with a low
estimate in excess of \$1000.

Please note that bids should be
submitted no later than 4pm on
the day prior to the sale. New
bidders must also provide proof
of identity when submitting bids.
Failure to do this may result in your
bid not being processed.

Live online bidding is available for this sale

Please email bids@bonhams.com
with 'live bidding' in the subject
line 48 hours before the auction
to register for this service.

INQUIRIES

Los Angeles

Dana Ehrman, GG
Director, LA Jewelry
Alexis Vourvoulis, GG
Emily Waterfall
Kelly Sitek, GG

Jean Ghika
Global Head of Jewelry
jean.ghika@bonhams.com

ADMINISTRATOR

Alexandra Schettini
alexandra.schettini@bonhams.com
+1 (323) 436 5424

New York:

Brett O'Connor, Senior
International Jewelry Director
Caroline Morrissey,
Head of Sales, US Jewelry
Camille Barbier, GG
+1 212 461 6526

San Francisco:

Shannon Beck, GG
Senior Specialist
+1 (415) 503 3306

CLIENT SERVICES

Monday to Friday 9am-5pm
+1 (323) 850 7500
+1 (323) 850 6090 Fax

Please see pages 124 to 126 for
bidder information including
Conditions of Sale, after-sale
collection and shipment.

Please note that irrespective
of origin, jadeite and rubies (and
any jewelry pieces that contain
them) may now be imported into
the United States.

REGISTRATION IMPORTANT NOTICE

Please note that all customers,
irrespective of any previous activity
with Bonhams, are required to
complete the Bidder Registration
Form in advance of the sale. The
form can be found at the back
of every catalogue and on our
website at www.bonhams.com
and should be returned by email or
post to the specialist department
or to the bids department at
bids.us@bonhams.com

To bid live online and / or
leave internet bids please go to
www.bonhams.com/auctions/25097
and click on the Register to bid link
at the top left of the page.

Bonhams

220 San Bruno Avenue
San Francisco, California 94103
© 2018, Bonhams & Butterfields
Auctioneers Corp.; All rights reserved.
Bond No. 57BSBGL0808

IMPORTANT NAMES & NOTICES

DIAMONDS, COLORED STONES & PEARLS

The Jewelry department of Bonhams & Butterfields recognizes that there are many various forms of treatments and enhancements used in diamonds and colored stones in order to improve their appearance and or color. Techniques such as heat treatment have been used to improve the color and transparency of both sapphires and rubies in addition to other gemstones. Techniques such as oiling have been used to enhance the clarity of emeralds while dying has been used to effect the color of jade. Techniques such as heat treatment, oiling, resin impregnation, irradiation, color diffusion, dying, fracture filling, and HTHP are just a few off the techniques that are in use today. Prospective buyers are therefore reminded that unless otherwise noted in our catalog description it must be assumed that some form of enhancement may have been used and that such treatment may not always be permanent or detectable and that our estimates have taken such possibilities into account. As a matter of policy, Bonhams & Butterfields endeavors to obtain certificates from recognized gemological laboratories when such certificates are deemed crucial to the authenticity of a gemstone. It is not possible however to gain certificates for all items offered for sale and it is therefore recommended where there is no mention of a certificate that all prospective buyers consult with one of our department specialists prior to purchase of such items.

PLEASE NOTE: A number of laboratories issue certificates that give more detailed descriptions of gemstones, however there may not be consensus between different laboratories on the degrees, or types of treatment for any particular gemstone. Neither is there necessarily consensus between different laboratories, or private appraisers, on the grading of diamonds. All gemstone weights are approximations only and although an independent laboratory grading may be used in the catalog text, we cannot guarantee such gradings.

Images shown may appear smaller or larger than actual size.

Although we endeavor to mention in our descriptions significant defects, needed repairs, absent stones and the like, **WE DO NOT GUARANTEE THAT THE DESCRIPTIONS ARE COMPREHENSIVE.** Please examine all lots carefully. It is the responsibility of the prospective bidder, or his agent, to determine the condition of lots during the preview. Condition reports have been created for most lots in this auction, and are available upon request. Please contact the Jewelry department at least two days prior to the sale date for additional information.

It is the responsibility of the buyer to investigate any applicable restrictions on purchased property and to obtain any export or import licenses and/or certificates as well as any other required documentation before shipping. The buyer's inability to export or import any such items or to do so timely shall not serve as the basis for any cancellation or rescission of the sale or any delay in payment. Prospective buyers who are uncertain as to whether a lot is subject to these restrictions or any other restrictions on importation or exportation are advised to consult with the specialist department in which the property is offered.

REGULATED SPECIES MATERIALS AND CITES PERMITS

The export of a lot from the United States or import into certain countries may be subject to export or import regulations, licensure and/or other restrictions; in particular, lots containing plant or animal materials such as ivory, rhinoceros horn, tortoiseshell, coral, whalebone or certain types of woods, irrespective of age or value, may require the granting of one or more export or import licenses or certificates, or may be banned from import altogether by some countries. Moreover, the ability to obtain an export license or certificate does not insure the ability to obtain an import license or certificate in another country. Lots that contain such regulated species materials may also not be eligible for exportation or for re-importation into the United States if they are not at least 100 years of age, and, under current law, lots containing African Elephant Ivory may no longer be re-imported into the United States regardless of age. In addition, resales of lots containing certain regulated species materials may be subject to restrictions in some jurisdictions.

Lots noted in the catalog with a **Y** next to the lot number contain one or more such regulated plant or animal materials. **It is the buyer's responsibility to investigate any such restrictions and to obtain any relevant export or import licenses. Please note that this process is governed by local authorities and may take considerable time. Regardless of any delay in the obtaining of an export or import license or certificate or denial of a license's or certificate's issuance, purchased lots shall be paid for in accordance with the Conditions of Sale, and any such delay or denial shall not serve as the basis for cancellation of any sale.** Prospective buyers are advised to obtain information from the relevant regulatory authorities regarding export and import restrictions, requirements, and costs prior to bidding.

Prospective buyers should also check with their local (e.g. state) regulatory authorities regarding any local restrictions and/or permit requirements that may apply with respect to purchases of regulated species materials, including without limitation purchases of items containing elephant ivory or rhino horn. For example, we are advised that New York buyers of any lot containing elephant or mammoth ivory or rhino horn will be responsible for obtaining a New York State permit before taking possession of the lot within New York State, and that the State of New Jersey has banned the import of items containing elephant or marine mammal ivory or rhino horn into that state.

Upon request, Bonhams can refer the purchaser to a third party agent to assist the purchaser in attempting to obtain the appropriate licenses and/or certificates. However, there is no assurance that any necessary licenses or certificates can be obtained. Please contact the Specialist Department for a suggested list of shipping agents prior to placing a bid if you are uncertain as to whether a lot is subject to export/import license or certificate requirements or related restrictions.

WATCHES

Although we endeavor to mention in our descriptions significant defects, needed repairs, absent stones and the like, **WE DO NOT GUARANTEE THAT THE DESCRIPTIONS ARE COMPREHENSIVE.** Please examine all watches carefully. It is the responsibility of the prospective bidder, or his agent, to determine the condition of watches during the preview. Except as expressly set forth in the Conditions of Sale, all watches are sold "as is". We do not guarantee the accuracy or operation of any watch function such as timekeeping, chronograph, calendar, repeater or register.

We make no judgments as to whether diamond dials or diamond bezels originated at the factory or are later additions.

INDEX

NAME	LOT NUMBER
Boucheron	10, 26, 27, 131
Buccellati	86, 214, 217, 220, 221, 406
Bulgari	127, 146, 198, 407, 448
Calgaro	393
Cartier	45, 59, 207, 223, 363, 374, 397, 398, 402
Cellini	184
Chanel	182
Charlton & Co.	328
David Webb	68, 101, 102
David Yurman	17, 186, 189, 190, 199, 202, 231
Denise Robergé	400
Edward Chiu	155
G. Petochi	107
Georg Wild, Idar-Oberstein	488
Glycine	55
Gucci	44, 324
Gurhan	212
Hamilton	58, 70
Hermès	205
Jaeger-LeCoultre	274
James Schwabe for Cartier	321
Kieselstein-Cord	188
Kurt Wayne	337
Lalaounis	124, 211
Marina B.	96
Mauboussin	1, 414
Mellerio Dits Meller	208
Nicholas Varney	395
Oscar Heyman & Brothers	3, 8
Patek Philippe	222
Piaget	6, 7, 108, 128, 379
Pomellato	30, 129
Roberto Coin	192
Rolex	46
Sabbadini	256
Seaman Schepps	92
Stephen Webster	168, 169
Tiffany & Co.	37, 87, 142, 145, 156, 204, 227, 323, 361, 404, 405, 413
Tony Duquette	215, 216
Tremonti	388
Trio	436
Van Cleef & Arpels	9, 81, 83, 301, 325, 333, 418
Verragio	477

INCLUDING PROPERTY FROM

- Property of a Laguna Beach Collection
- Property from a Pacific Northwest Collection
- Property of a New Mexico Collection
- Property from a Paradise Valley Estate
- Property of a Los Angeles Collector
- Property from a Carefree Arizona Estate
- Property from the Collection of Watson Powell, Des Moines, Iowa
- Property from the Estate of Sydney Hordon HSC
- Property from the Estate of Mae Sue Talley
- Property of a Los Angeles Collector



81



84



338



1
AN 18K GOLD LEAF PIN, MAUBOUSSIN, PARIS
signed Mauboussin, Paris, with French assay marks; dimensions: 2 x 1in.

\$1,200 - 1,800

2
A DIAMOND, PLATINUM AND GOLD BROOCH, FRENCH
with French assay and maker's marks; estimated total diamond weight: 3.60cts; gross weight approximately: 28 grams; dimensions: 3 3/4 x 1 3/4in.

\$1,500 - 2,500

3
A RUBY, DIAMOND AND 18K GOLD RING, OSCAR HEYMAN & BROTHERS
with maker's mark, no. 35861; size: 6

\$3,000 - 5,000

4
A RUBY, DIAMOND AND 18K GOLD BRACELET
estimated total diamond weight: 4.40cts; length: 7 1/4in.

\$3,500 - 5,000

5
A DIAMOND AND 18K GOLD RING
estimated total diamond weight: 1.30cts; size: 5

\$2,000 - 3,000



6



8



9



7



10

6
AN 18K GOLD BRACELET WRISTWATCH, PIAGET

mechanical movement; case and dial signed, case no. 924P5 77547; gross weight approximately: 47 grams; case diameter: 22mm; length: 6 1/2in.

\$1,500 - 2,500

7
A LADY'S 18K GOLD 'POLO' INTEGRAL BRACELET WRISTWATCH, PIAGET

quartz movement; dial, case, clasp signed, no. 15201 C701 443636; gross weight approximately: 76 grams; length: 6in.

\$2,000 - 3,000

PROPERTY FROM A PARADISE VALLEY ESTATE

8
A DIAMOND, PLATINUM AND 18K GOLD RING, OSCAR HEYMAN & BROTHERS with maker's mark, no. J7446; estimated total diamond weight: 1.50cts; size: 4 1/2

\$2,000 - 3,000

PROPERTY OF VARIOUS OWNERS

9
A DIAMOND AND 18K GOLD BAND, VAN CLEEF & ARPELS, NEW YORK signed Van Cleef & Arpels, no. NY5K833.2; with signed box; size 6 1/2

\$1,200 - 1,800

10
A PAIR OF CARNELIAN, DIAMOND, AND 18K GOLD EAR CLIPS, BOUCHERON, FRENCH

carnelian beads approximately: 9.1mm to 15.6mm; signed Boucheron, no.39668, with French assay and maker's marks; length: 2 1/2in.

\$3,000 - 5,000



11

**11
A TURQUOISE, DIAMOND AND WHITE GOLD RING**

oval cabochon turquoise approximately: 18.15 x 14.15 x 6.15mm; *estimated total diamond weight: 2.70cts; size: 6 3/4*

\$1,800 - 2,500

**12
A SAPPHIRE, TURQUOISE AND 18K GOLD BRACELET, ITALIAN**

length: 7 1/8in.

\$2,500 - 3,500



13

**13
A SAPPHIRE, DIAMOND, 18K GOLD AND PLATINUM RING**

oval double cabochon sapphire approximately: 12.87 x 9.02 x 7.14mm; *with maker's mark; gross weight approximately: 33 grams; size: 8 1/2*

\$3,000 - 5,000

**14
A BRONZE GREEK COIN, DIAMOND AND TRI-COLOR GOLD NECKLACE**

Parthian Kingdom coin, circa 200 BC, Mithridates II; *gross weight approximately: 75 grams; length: 16in.*

\$2,000 - 3,000



15

**15
A TANZANITE, COLORED DIAMOND, DIAMOND AND 18K BI-COLOR GOLD RING**

cushion mixed-cut tanzanite approximately: 12.46 x 8.95 x 7.79mm; *gross weight approximately: 25 grams; size: 7 1/2 (yellow diamonds untested for origin of color)*

\$2,000 - 3,000





16

16
A DIAMOND AND 18K BI-COLOR GOLD FLOWER RING
estimated total diamond weight: 1.55cts; size: 7 1/4

\$1,500 - 2,000

17

17
A BLUE TOPAZ, DIAMOND AND 18K GOLD RING, DAVID YURMAN
oval fancy mixed-cut blue topaz approximately: 23.54 x 19.63 x 10.15mm; signed D.Y. with maker's mark; with signed pouch; size: 9 1/4

\$2,000 - 3,000

18

18
AN 18K GOLD CHAIN
weighing approximately: 48 grams; length: 31in.

\$1,200 - 1,800

19

19
A PAIR OF LAPIS LAZULI, TURQUOISE, WHITE JASPER, DIAMOND AND 18K GOLD EAR PENDANTS
dimensions: 3 1/4 x 2in.

\$1,800 - 2,500



20



21



22



23

20
**A TURQUOISE, DIAMOND, SAPPHIRE
AND GOLD RING**
modified rectangular cabochon turquoise
approximately: 26.10 x 19.95 x 10.56mm;
estimated total diamond weight: 1.30cts; size
6 3/4

\$3,000 - 5,000

22
**A PAIR OF SAPPHIRE AND 18K YELLOW
GOLD CUFFLINKS, MECAN**
signed Mecan; dimensions: 1 1/8 x 3/4in.

\$1,500 - 2,000

23
**A DIAMOND AND BI-COLOR GOLD
HINGED BANGLE**
estimated total diamond weight: 1.20cts;
gross weight approximately: 61 grams;
diameter: 2 1/2in.

\$2,000 - 3,000

21
**A DIAMOND AND 18K GOLD ELEPHANT
BRACELET, ITALIAN**
with Italian assay marks; gross weight
approximately: 119 grams; length: 7in.

\$2,000 - 3,000



24



25



27



26

24
A DIAMOND AND GOLD RING
modified triangular brilliant-cut diamond
weighs: 1.53cts; *estimated total remaining
diamond weight: 0.95ct; size: 6 3/4*

\$5,000 - 8,000

Accompanied by GIA report #21957199925
dated October 10, 2018, stating the diamond
as: E color and SI2 clarity.

25
**A SAPPHIRE, DIAMOND AND 18K GOLD
RING**
oval cabochon sapphire approximately: 8.17
x 7.07 x 5.70mm; size: 5 3/4

\$2,500 - 3,500

26
**A LAPIS LAZULI, ROCK CRYSTAL
QUARTZ AND 18K GOLD BRACELET,
BOUCHERON, FRENCH**
*signed Boucheron, no. A827-813 with
French assay marks; length: 7 1/2in.*

\$3,000 - 5,000

27
**A LAPIS LAZULI, ROCK CRYSTAL
QUARTZ AND 18K GOLD COLLAR,
BOUCHERON, FRENCH**
*signed Boucheron, no. A828663 with French
assay marks; length: 16in.*

\$5,000 - 7,000



28

29



30



31

28

A TURQUOISE, DIAMOND AND 18K GOLD RING

oval cabochon turquoise approximately: 31.00 x 19.81 x 12.50mm; size: 6

\$3,000 - 5,000

29

A 14K GOLD TUBOGAS COLLAR

weighing approximately: 106 grams; length: 15in.

\$2,000 - 3,000

30

THREE DIAMOND AND 18K BI-COLOR GOLD 'MILANO' BANDS, POMELLATO

signed Pomellato, no. 150012644, 150003963, 150015612; size: 6 3/4

\$2,000 - 3,000

31

TWO PAIRS OF AGATE, WHITE JASPER, DIAMOND AND 18K GOLD FLOWER EAR CLIPS

dimensions: 1 1/8 x 1 1/16in. and 1 1/4 x 1 1/4in.

\$2,000 - 3,000



32
A TURQUOISE, DIAMOND AND 18K GOLD BANGLE
*gross weight approximately: 44 grams;
 diameter: 2 3/8in.*

\$1,500 - 2,000

33
A DIAMOND AND BI-COLOR GOLD BRACELET
*estimated total diamond weight: 6.70cts;
 gross weight approximately: 43 grams;
 length: 7in.*

\$4,000 - 6,000

34
A DIAMOND AND 18K GOLD BRACELET
*estimated total diamond weight: 2.90cts;
 gross weight approximately: 45 grams;
 length: 7 1/2in.*

\$2,500 - 3,500

35
A PAIR OF TURQUOISE, WHITE JASPER, DIAMOND AND 18K GOLD EAR PENDANTS
length: 2in.

\$1,800 - 2,500



36

37

36
A DIAMOND AND 18K WHITE GOLD RING
center cushion modified brilliant-cut diamond
weighs: 2.01cts; size: 5 1/4

\$8,000 - 12,000

Accompanied by GIA report #5192810021
dated October 31, 2018, stating the diamond
as: H color, SI1 clarity.

37
**AN 18K GOLD FRINGE NECKLACE,
TIFFANY & CO., ITALIAN, CIRCA 1960**
*signed Tiffany e C, with Italian assay marks;
weighing approximately: 112 grams; length:
18in.*

\$9,000 - 12,000





38
A RETRO AQUAMARINE, DIAMOND AND TRI-COLOR GOLD RING, CIRCA 1945
 cut-cornered rectangular step-cut aquamarine approximately: 17.30 x 14.85 x 10.82mm; size: 5 1/2

\$2,500 - 3,500

PROPERTY OF A NEW MEXICO COLLECTION

39
A FANCY COLOR DIAMOND, DIAMOND AND GOLD RING
 round brilliant-cut Fancy Deep Brownish Yellowish Orange diamond weighing: 0.97ct; size: 10 1/2

\$2,500 - 3,500

Accompanied by GIA report #2195160666, dated March 20, 2018, stating the 0.97ct round brilliant diamond as: Natural Fancy Deep Brownish Yellowish Orange.

PROPERTY OF VARIOUS OWNERS

40
A RETRO 18K BI-COLOR GOLD BRACELET, FRENCH, CIRCA 1945
 with French assay and maker's marks; weighing approximately: 81 grams; length: 8in.

\$2,000 - 4,000

41
A DIAMOND AND 14K GOLD RING
 round brilliant-cut diamond approximately: 0.90ct; size: 6 3/4

\$3,000 - 5,000

PROPERTY FROM A PARADISE VALLEY ESTATE

42
A DIAMOND AND 14K GOLD DRESS SET
 cufflink length: 5/8in.

\$800 - 1,200



43



44



45



46

PROPERTY OF VARIOUS OWNERS

43
A MOONSTONE, RUBY, DIAMOND AND 14K GOLD BROOCH AND EARRING SET, CIRCA 1940
dimensions: 2 1/2in x 2 3/4 in; earring length: 1 1/4in.

\$1,500 - 2,000
To be sold without reserve

44
AN 18K GOLD BANGLE, GUCCI, ITALIAN
signed Gucci, with Italian assay marks; weighing approximately: 47 grams; diameter: 2 3/4in. (adjustable)

\$1,800 - 2,500

45
AN 18K GOLD STRAP WRISTWATCH, CARTIER
mechanical movement; backwind; with Cartier deployant buckle; case and dial signed; case no. 344.509; gross weight approximately: 26 grams; case width: 15mm.

\$2,000 - 3,000

46
AN 18K GOLD BRACELET WRISTWATCH WITH CONCEALED DIAL, ROLEX
mechanical movement; case, dial and movement signed; gross weight approximately 68 grams; case width: 14mm; length: 6 3/4in.

\$2,000 - 3,000



47



49



50



48



51

47

A PAIR OF DIAMOND AND PLATINUM EAR PENDANTS

two old European-cut diamonds approximately: 1.15cts each; two old mine-cut diamonds approximately: 0.85ct. each; *estimated remaining diamond weight: 4.50cts; length: 1 3/4in.*

\$12,000 - 18,000

48

A PAIR OF SAPPHIRE, DIAMOND AND PLATINUM DRESS CLIPS, FRENCH

with French assay and maker's marks; estimated total diamond weight: 8.00cts; gross weight approximately: 43 grams; dimensions: 2 3/4 x 2 1/4in.

\$4,000 - 6,000

49

A DIAMOND AND PLATINUM RING

round brilliant-cut diamond approximately: 2.90cts; *size: 7*

\$8,000 - 10,000

50

A STAR SAPPHIRE, DIAMOND AND PLATINUM RING

round cabochon star sapphire approximately: 18.65 x 18.0 x 11.5mm; *estimated total diamond weight: 1.25cts; size: 4 1/4*

\$2,500 - 3,500

51

A DIAMOND AND PLATINUM BRACELET WRISTWATCH, CIRCA 1925

mechanical movement; *movement signed Concord; width: 15mm; length 9in. (adjustable)*

\$1,500 - 2,500



52



53



55

54

**52
A SAPPHIRE, DIAMOND AND PLATINUM RING**

size: 7 1/4

\$3,000 - 5,000

**53
A SAPPHIRE, DIAMOND AND 18K WHITE GOLD RING**

cushion modified brilliant-cut sapphire weighs: 5.76cts; total diamond weight: 1.11cts; size: 6 3/4

\$2,800 - 3,500

Accompanied by GIA report #5182571675, dated July 20, 2017, stating: Natural Sapphire, Sri Lankan origin, no Indications of heating.

**54
A DIAMOND AND PLATINUM BRACELET**

estimated total diamond weight: 5.10cts; length: 6 1/4in., width: 1 1/8in.

\$4,000 - 6,000

**55
AN ART DECO DIAMOND AND PLATINUM BRACELET WRISTWATCH, GLYCINE, CIRCA 1925**

mechanical movement; estimated total diamond weight: 2.75cts; gross weight approximately: 32 grams; length: 6 5/8in.

\$1,500 - 2,000

To be sold without reserve



56

56
A PAIR OF DIAMOND, SAPPHIRE AND PLATINUM EAR PENDANTS
total diamond weight: 2.15cts; length: 1 1/4in.

\$1,800 - 2,500

57
A SAPPHIRE, DIAMOND AND 18K WHITE GOLD RING
cushion cabochon sapphire approximately: 12.30 x 9.00 x 4.95mm; size: 7

\$2,000 - 3,000



57

58
A DIAMOND AND PLATINUM BRACELET WRISTWATCH, HAMILTON
mechanical movement; dial and movement signed; case width: 14mm; length: 5 3/4in.

\$1,800 - 2,500



(front)

59



(back)

58

59
A PLATINUM KEYLESS WIND OPEN FACE POCKET WATCH WITH KNIFE EDGE, CARTIER, CIRCA 1920
silvered dial, black Roman numerals, black outer minute track, blued steel spade hands; engine turned 19-jewel Swiss lever, adjusted to 8 positions; dial signed Cartier, movement signed European Watch and Clock Co., no.23506 and 6509, engraved 'Made in France'; size: 46mm

\$4,000 - 6,000



60

60
A DIAMOND, SYNTHETIC EMERALD AND PLATINUM RING

estimated total diamond weight: 1.85cts; size: 8 1/4

\$2,500 - 3,500



61

61
A DIAMOND, RUBY AND PLATINUM RING

estimated total diamond weight: 1.05cts; size: 5 3/4

\$1,500 - 2,500



62

62
A DIAMOND, RUBY AND PLATINUM BRACELET

estimated total diamond weight: 8.50cts; length: 7in.

\$5,000 - 7,000

63
A DIAMOND AND PLATINUM BRACELET

total diamond weight: 10.91cts; gross weight approximately: 25 grams; length: 7in.

\$6,000 - 8,000



64

64
AN EMERALD, DIAMOND AND PLATINUM RING, FRENCH

square cut-cornered step-cut emerald approximately: 6.72 x 6.65 x 4.46mm; with French assay marks; size: 5 1/4

\$2,000 - 3,000



65



66



68



67

65
A DIAMOND AND PLATINUM ETERNITY BAND

estimated total diamond weight: 4.50cts; size: 6 1/4

\$3,000 - 5,000

66
A CULTURED PEARL, DIAMOND AND WHITE GOLD BRACELET
round brilliant-cut diamond approximately: 1.20cts; estimated remaining diamond weight: 2.75cts; size: 7

\$2,000 - 3,000

67
A CULTURED PEARL, DIAMOND AND 14K WHITE GOLD BRACELET

pearls approximately: 7.2mm to 7.5mm; estimated total diamond weight: 9.30cts; length: 7in., width: 1 1/2in.

\$5,000 - 7,000

68
A PAIR OF CULTURED PEARL, DIAMOND AND 14K WHITE GOLD EAR CLIPS, DAVID WEBB

pearls approximately: 8.8mm to 9.5mm; signed WEBB; estimated total diamond weight: 1.50cts; dimensions: 1 x 7/8in.

\$1,500 - 2,000



69



70

69
A DIAMOND, 18K WHITE GOLD AND PLATINUM CLIP, FRENCH, CIRCA 1950
*with French assay and maker's marks;
estimated total diamond weight: 2.70cts;
dimensions: 3 1/4 x 1in.*

\$2,000 - 3,000

70
A DIAMOND, PLATINUM AND 14K GOLD BANGLE WRISTWATCH, HAMILTON
*17j mechanical movement; signed Hamilton;
estimated total diamond weight: 1.85cts;
gross weight approximately: 62 grams; inner
diameter: 2 1/4in.*

\$1,500 - 2,000

71
A CULTURED PEARL, DIAMOND AND WHITE GOLD NECKLACE
*pearls approximately: 9.0mm to 9.5mm;
estimated total diamond weight: 9.30cts;
length: 24in. to 26in.*

\$5,000 - 7,000



71



72



74



73



75



76

72 AN EMERALD, DIAMOND AND 18K GOLD RING

rectangular step-cut emerald weighs: 5.78cts; estimated total diamond weight: 1.15cts; size: 6 1/2

\$7,000 - 9,000

Accompanied by AGL report #1090332 dated March 20, 2018, stating the emerald as: Natural, minor clarity enhancement.

73 A PAIR OF JADEITE JADE, DIAMOND AND WHITE GOLD EAR CLIPS

dimensions: 1/2 x 3/8in.

\$2,000 - 3,000

Accompanied by GIA report #5192588256 dated August 21, 2018, stating the two jadeite jade as: Natural, with no indications of impregnation.

74 AN EMERALD, DIAMOND AND 18K BI-COLOR GOLD RING

estimated total diamond weight: 4.15cts; size: 7 3/4

\$5,000 - 8,000

75 A DIAMOND AND GOLD BRACELET
estimated total diamond weight: 2.25cts; gross weight approximately: 73 grams; length: 7in.

\$3,000 - 5,000

76 AN EMERALD, SAPPHIRE, DIAMOND AND 18K GOLD DRESS SET
comprising a pair of cuff-links and four studs; gross weight approximately: 34 grams; cuff-link diameter: 1in., stud diameter: 3/4in.

\$6,000 - 8,000



77



78



79

80

77

A PAIR OF DIAMOND AND 18K WHITE GOLD EAR STUDS

estimated total diamond weight: 2.35cts; diameter: 3/8in.

\$1,800 - 2,500

78

A PAIR OF DIAMOND AND BI-COLOR GOLD BROOCHES

estimated total diamond weight: 7.25cts; gross weight approximately: 29 grams; dimensions: 1 1/2 x 1 1/2in.

\$3,000 - 5,000

79

AN EMERALD, DIAMOND AND 18K GOLD RING, FRENCH

oval cabochon emerald approximately: 11.18 x 9.41 x 4.84 mm; with French assay mark; size 6 1/4

\$2,000 - 4,000

80

AN 18K GOLD NECKLACE, FRENCH

with French assay and maker's marks; weighing approximately: 54 grams; length: 15 3/4in.

\$1,500 - 2,000



81



82



83



84



85

PROPERTY FROM THE ESTATE OF SYDNEY HORDON HSC

81
A DIAMOND, SAPPHIRE, ENAMEL AND 18K GOLD RAM CLIP-BROOCH, VAN CLEEF & ARPELS, NEW YORK
signed VCA, no. NY IV702-6; dimensions: 1 1/2 x 1in.

\$4,000 - 6,000

82
A DIAMOND AND 18K GOLD 'EN TREMBLANT' BROOCH AND EAR CLIPS SET
estimated total diamond weight: 1.65cts; gross weight approximately: 41 grams; lengths: 2in. and 1 1/4in.

\$2,000 - 3,000

83
AN 18K GOLD LINK NECKLACE, VAN CLEEF & ARPELS, NEW YORK
signed VCA, no. NY4V60-1; weighing approximately: 79 grams; length: 16in.

\$5,000 - 8,000

PROPERTY OF ANOTHER OWNER

84
A DIAMOND, RUBY AND 18K GOLD HIPPOPOTAMUS BROOCH
gross weight approximately: 27 grams; dimensions: 1 7/8 x 1 1/4in.

\$1,000 - 1,500

PROPERTY FROM THE ESTATE OF SYDNEY HORDON HSC

85
A GEM-SET 14K GOLD CHARM BRACELET
gross weight approximately: 102 grams; length: 7 1/4in.

\$2,000 - 3,000



86



87



88



89

PROPERTY OF VARIOUS OWNERS

86
A DIAMOND AND 18K BI-COLOR GOLD CLIP, BUCCELLATI, ITALIAN
signed Buccellati, no. 4303, with Italian assay marks; gross weight approximately: 32 grams; dimensions: 3 x 1 3/4in.

\$3,000 - 5,000

87
A SAPPHIRE, DIAMOND AND GOLD RING, TIFFANY & CO.
signed Tiffany & Co.; size: 6

\$3,000 - 5,000

88
A DIAMOND AND 18K BI-COLOR GOLD BRACELET, ITALIAN
with Italian assay and maker's mark; gross weight approximately: 57 grams; length: 6 1/2in.

\$3,000 - 5,000

89
A GEM-SET 14K GOLD CHARM BRACELET
gross weight approximately: 158 grams; length: 7 3/8in.

\$3,000 - 5,000



94

95

90

96

93

91

92



97



98



99

90
A PAIR OF CULTURED PEARL, DIAMOND AND 18K GOLD DAY/NIGHT EAR CLIPS, FRENCH

pearls approximately: 9.0mm to 12.0mm; with French assay and maker's marks, no. ML2071; estimated total diamond weight: 3.50cts; length: 1 3/4in.

\$2,000 - 4,000

91
A PLIQUE-À-JOUR ENAMEL, DIAMOND, SILVER AND GEM-SET GOLD DRAGONFLY BROOCH

estimated total diamond weight: 1.70cts; gross weight approximately: 40 grams; dimensions: 2 3/4 x 4 1/2in.

\$2,000 - 3,000

92
A CULTURED PEARL AND GEM-SET 18K GOLD 'MULTI BAROQUE' NECKLACE, SEAMAN SCHEPPS

unsigned, with signed box; length: 24in.

\$4,000 - 6,000

Accompanied by an appraisal of authenticity from Seaman Schepps.

93
A SAPPHIRE AND 18K GOLD RING

cushion brilliant step-cut sapphire weighs: 1.59cts; size: 5 1/4

\$8,500 - 9,500

Accompanied by SSEF report #96981 dated January 4, 2018, stating the sapphire as: Natural, Kashmir origin, no indications of heat enhancement.

94
A PAIR OF GEMSTONE, DIAMOND, CULTURED PEARL AND 14K GOLD EARRINGS

gross weight approximately: 27 grams; length: 1 3/8in.

\$1,200 - 1,800

95
A PLIQUE-À-JOUR ENAMEL, DIAMOND AND GEM-SET 18K GOLD DRAGONFLY BROOCH

dimensions: 2 1/2 x 3in.

\$1,800 - 2,500

96
A BLUE TOPAZ, PINK TOURMALINE, DIAMOND, BLACK ONYX AND 18K GOLD RING, MARINA B.

signed Marina B., no. C2917, with maker's mark; size: 7

\$2,000 - 3,000

97
A TOPAZ, DIAMOND AND 18K GOLD RING

cushion mixed-cut topaz approximately: 13.95 x 11.00 x 7.55mm; size: 6 1/2

\$1,500 - 2,000

98
A DIAMOND AND 18K GOLD PENDANT NECKLACE

gross weight approximately: 81 grams; length: 16 1/2in.

\$2,000 - 3,000

99
A WATERMELON TOURMALINE, TOURMALINE, DIAMOND AND GOLD RING

size: 7

\$1,800 - 2,500



100



101



102



103



104

100
AN AMETHYST AND 18K GOLD NECKLACE AND TWO BRACELET SET
signed LRB; gross weight approximately: 184 grams; necklace length: 17in., bracelet lengths: 7in. and 8in.

\$7,500 - 8,500

101
AN AMETHYST, DIAMOND AND 18K GOLD RING, DAVID WEBB
oval cabochon amethyst approximately: 24.71 x 17.56mm; signed WEBB; gross weight approximately: 80 grams; size: 8

\$3,000 - 5,000

102
A PAIR OF 18K GOLD EAR CLIPS, DAVID WEBB
signed WEBB; weighing approximately: 46 grams; dimensions: 1 1/2 x 1in.

\$2,000 - 3,000

103
A CAT'S-EYE AQUAMARINE, ENAMEL, METAL AND GEM-SET GOLD BROOCH/ PENDANT ON 18K GOLD CHAIN, VICENTE GARCIA OF SPAIN
round cabochon cat's-eye aquamarine approximately: 25.04 x 24.97mm; with signed box and papers; chain length: 19in., brooch dimensions: 2 1/4 x 2 1/4in.

\$3,000 - 5,000

104
A BERYL, DIAMOND AND 18K GOLD RING
cushion mixed-cut beryl approximately: 30.50 x 23.07 x 14.15mm; size: 5 3/4

\$5,000 - 7,000



105

107

108

106

105

A DIAMOND AND 18K GOLD RING

modified heart brilliant-cut diamond weighs:
5.05cts; size: 6

\$7,000 - 10,000

Accompanied by GIA report #1132100122
dated June 24, 2013, stating the diamond as:
J color, SI2 clarity.

**PROPERTY OF A LOS ANGELES
COLLECTOR**

106

**A DIAMOND AND 18K BI-COLOR GOLD
HINGED BANGLE**

gross weight approximately: 26 grams;
diameter: 2 1/4in.

\$800 - 1,000

PROPERTY OF VARIOUS OWNERS

107

**A CITRINE AND 18K GOLD NECKLACE
AND EAR CLIPS SET, G. PETOCHI,**

signed G. Petochi; gross weight
approximately: 111 grams; necklace length:
19in., ear clip dimensions: 1 x 3/4in.

\$3,000 - 5,000

108

**A LADY'S DIAMOND AND 18K GOLD
BRACELET WRISTWATCH WITH DATE,
PIAGET**

quartz movement; case, dial, and movement
signed no. 23001 501 D 597800; gross
weight approximately: 109 grams; case
width: 30mm; length: 6 3/4in.

\$4,000 - 6,000



111



109

110



112



109
A CAT'S-EYE CHRYSOBERYL AND 14K GOLD RING
size: 6 1/4

\$5,000 - 7,000

Accompanied by GIA report #5151838684, dated January 14, 2014, stating the Cat's-Eye Chrysoberyl as: Brownish Yellowish Green color.

110
A PINK TOURMALINE AND 18K BI-COLOR GOLD BRACELET AND NECKLACE SET, SIGNORETTI, ITALIAN
signed Signoretti, with Italian assay marks; gross weight approximately: 183 grams; bracelet length: 8in., necklace length: 18in.

\$3,000 - 5,000

111
A PAIR OF PINK TOURMALINE, HEMATITE AND 18K GOLD EAR CLIPS
gross weight approximately: 41 grams; dimensions: 1 1/4 x 1in.

\$1,500 - 2,000

112
A RUTILATED QUARTZ AND 18K GOLD RING
freeform cabochon rutilated quartz approximately: 31.00 x 23.00 x 13.66mm; size: 6 1/2

\$1,800 - 2,500



113



114



115



116

113
AN EMERALD, DIAMOND AND 18K GOLD RING

cut-cornered rectangular step-cut emerald weighs: 4.37cts; size: 6 1/2

\$4,000 - 6,000

Accompanied by AGL report #1092838 dated June 12, 2018, stating the emerald as: Natural, insignificant to minor clarity enhancement.

PROPERTY OF A LOS ANGELES COLLECTOR

114
A JADEITE JADE, DIAMOND AND GOLD RING

size: 7 1/2

\$800 - 1,000

PROPERTY OF VARIOUS OWNERS

115
A JADEITE JADE AND GOLD BRACELET

round disc jadeite jade approximately: 26.5mm to 29.0mm; length: 7 1/2in.

\$1,500 - 2,000

116
A MID-CENTURY EMERALD, DIAMOND AND GOLD BROOCH, CIRCA 1960

estimated total diamond weight: 1.15cts; dimensions: 2 1/2 x 1 3/4in.

\$1,500 - 2,500



117



118



119



120



121

PROPERTY OF A LOS ANGELES COLLECTOR

117
AN EMERALD, DIAMOND AND GOLD RING
square step-cut emerald approximately: 7.75 x 7.64 x 5.67mm; size: 7 3/4

\$2,000 - 3,000

PROPERTY OF VARIOUS OWNERS

118
A PAIR OF JADEITE JADE, DIAMOND AND 14K GOLD EAR CLIPS
oval cabochon jadeite jade approximately: 9.63 x 7.61 x 2.54mm; dimensions: 3/4 x 1/2in.

\$1,500 - 2,500

See department for Mason Kay report.

119
A DIAMOND AND BI-COLOR GOLD HINGED BANGLE
estimated total diamond weight: 2.50cts; gross weight approximately: 65 grams; diameter: 2 1/4in.

\$3,000 - 5,000

120
A DIAMOND AND 18K GOLD NECKLACE, LOTOS

signed Lotos; estimated total diamond weight: 1.00ct; gross weight approximately: 119 grams; length: 16in.

\$4,000 - 6,000

121
A JADEITE JADE, DIAMOND, AND 14K GOLD RING

oval cabochon jadeite jade approximately: 14.06 x 19.55 x 5.02mm; size: 6 3/4

\$1,800 - 2,500

Accompanied by Mason Kay report no. 180309-946, dated March 8, 2018, stating: Natural Jadeite Jade - No Dye or Polymer Detected - 'A' Jade.



122



123



124

PROPERTY OF A NEW MEXICO COLLECTION

122
A JADEITE JADE AND 14K GOLD RING
size: 5 1/4

\$800 - 1,000

PROPERTY OF VARIOUS OWNERS

123
A DIAMOND AND 18K BI-COLOR GOLD BANGLE
*estimated total diamond weight: 5.50cts;
gross weight approximately: 52 grams;
diameter: 2 1/4in.*

\$3,000 - 5,000

124
AN 18K GOLD NECKLACE, EARRING AND RING SUITE, LALAOUNIS, GREEK
each with Lalaounis maker's mark; gross weight approximately: 116 grams; necklace length: 15 1/2in.; earring length: 2 1/4in., ring size: 5 1/2

\$6,000 - 8,000





125

128

126

127

125

A DIAMOND AND 18K GOLD BAND
estimated total diamond weight: 2.70cts;
size: 5 1/4

\$2,000 - 3,000

126

A DIAMOND AND 18K GOLD RING
round brilliant-cut diamond approximately
0.95ct; size: 6

\$3,000 - 5,000

127

**AN 18K BI-COLOR GOLD BRACELET,
BULGARI, ITALIAN**
signed Bulgari, no. 740215, with Italian
assay marks; with signed box; weighing
approximately: 80 grams; length: 8in.

\$5,000 - 8,000

128

**A PAIR OF DIAMOND AND 18K GOLD
'POSSESSION' HOOP EARRINGS,
PIAGET, 1990**
signed Piaget, no. A00484; estimated total
diamond weight: 1.10cts; diameter: 1in.

\$2,000 - 3,000

129

**A PAIR OF DIAMOND AND 18K GOLD
EAR CLIPS, POMELLATO**
signed Pomellato; dimensions: 1 x 3/4in.

\$2,000 - 3,000

**PROPERTY FROM A PACIFIC
NORTHWEST COLLECTION**

130

**A JADEITE JADE AND 18K GOLD
SADDLE RING**
size: 11 1/4

\$2,000 - 3,000
To be sold without reserve

Accompanied by Mason Kay report
#1800126-927, dated January 26, 2018,
stating: Natural Jadeite Jade-No Dye or
Polymer detected-'A' Jade.

PROPERTY OF VARIOUS OWNERS

131

**A LAPIS LAZULI AND 18K GOLD RING,
BOUCHERON, FRENCH**
oval cabochon lapis lazuli approximately:
10.15 x 6.90 x 6.00mm; signed Boucheron,
no. A537D855, with French assay marks;
size: 6

\$1,500 - 2,500

132

A JADEITE JADE BEAD NECKLACE
jadeite jade beads approximately: 12.6mm;
length: 39in.

\$2,500 - 3,500

Accompanied by Mason Kay report #181003-
25582, dated October 3, 2018, stating:
Natural Jadeite Jade-No Dye or polymer
detected-'A' Jade.

133

**A DIAMOND AND 18K BI-COLOR GOLD
CUFF**
gross weight approximately: 89 grams;
diameter: 2 1/8in.

\$3,000 - 5,000

134

**A JADEITE JADE, DIAMOND, BLACK
ONYX AND 18K GOLD RING**
oval cabochon jadeite jade approximately
18.0 x 12.5 x 6.7mm; size: 4 3/4

\$1,500 - 2,500

135

**A CARVED CHRYSOPRASE, BLACK
ONYX, DIAMOND AND 18K GOLD
BRACELET**
gross weight approximately: 60 grams;
length: 6 1/2in.

\$1,500 - 2,500



129



130



131



132



133



134



135

136



137



138



140



141



139

136
A DIAMOND AND 18K WHITE GOLD PENDANT ON A DIAMOND, 18K WHITE GOLD AND LEATHER COLLAR
estimated total diamond weight: 7.00cts; collar length: 11in. to 15in., pendant dimensions: 3 x 1 3/4in.

\$4,000 - 7,000

137
A PAIR OF BLACK ONYX, DIAMOND AND WHITE GOLD EARRINGS
estimated total diamond weight: 1.20cts; length: 1 1/8in.

\$2,500 - 3,500

138
A DIAMOND AND 18K WHITE GOLD RING
total diamond weight: 1.80cts; size: 7 1/4

\$1,500 - 2,500

139
A SAPPHIRE, DIAMOND AND WHITE GOLD ETERNITY BAND
estimated total diamond weight: 1.50cts; size: 6 1/2

\$1,500 - 2,000

140
A DIAMOND AND PLATINUM RING
round brilliant-cut diamond approximately: 2.05cts; size: 7

\$7,000 - 9,000

141
A DIAMOND AND 18K WHITE GOLD RING
estimated total diamond weight: 3.30cts; size: 6 1/4

\$2,000 - 3,000



144

143

142

145

146

142
A PAIR OF DIAMOND AND PLATINUM EARRINGS, PALOMA PICASSO FOR TIFFANY & CO.
signed Paloma Picasso and Tiffany & Co.; length: 1 1/8in.

\$1,800 - 2,200

143
A DIAMOND AND PLATINUM NECKLACE
estimated total diamond weight: 0.75ct; gross weight approximately: 91 grams; length: 16in.

\$3,000 - 5,000

144
A DIAMOND AND RHODIUM PLATED GOLD RING
center round brilliant-cut diamond approximately: 1.00ct; estimated remaining diamond weight: 1.00ct; size: 4 1/2

\$2,000 - 3,000

145
A PAIR OF DIAMOND AND PLATINUM 'X' EARRINGS, PALOMA PICASSO FOR TIFFANY & CO., 1985
signed Paloma Picasso and Tiffany & Co.; dimensions: 3/4 x 5/8in.

\$1,800 - 2,200

146
A HARDSTONE AND 18K WHITE GOLD CHARM BRACELET, BULGARI
signed Bulgari; gross weight approximately: 37 grams; length: 7 1/2in.

\$4,000 - 6,000



147



148



149

150

147

AN EMERALD, DIAMOND AND 14K WHITE GOLD RING

rectangular step-cut emerald approximately: 11.2 x 9.9 x 5.5mm; *estimated total diamond weight: 1.95cts; size: 6 3/4*

\$2,000 - 3,000

148

A PAIR OF EMERALD, DIAMOND AND WHITE GOLD EAR CLIPS

estimated total diamond weight: 4.00cts; dimensions: 1 1/8in.

\$2,500 - 3,500

149

AN EMERALD, DIAMOND AND 18K WHITE GOLD RING

cushion mixed-cut emerald weighs: 11.73cts; *total diamond weight: 1.72cts; size: 6 1/4*

\$3,500 - 5,000

Accompanied by GIA report #2191437033, dated July 11, 2018, stating: Natural Beryl, Emerald, Zambian origin, Clarity Enhanced (F3).

150

A COLORED CULTURED PEARL, DIAMOND AND 18K WHITE GOLD NECKLACE

pearls approximately: 10.9 mm to 11.8mm; *estimated total diamond weight: 9.74cts; length: 16 1/2in. (pearls untested for origin of color)*

\$6,000 - 8,000



151



153



154



152



155

151

A PAIR OF EMERALD, DIAMOND AND 18K BI-COLOR GOLD EARRINGS

cut-cornered rectangular step-cut emeralds approximately: 6.43 x 5.60 x 5.45mm; *dimensions: 5/8 x 1/2in.*

\$2,000 - 3,000

152

AN EMERALD, DIAMOND AND 18K WHITE GOLD RING

octagonal step-cut emerald measures: 11.89 x 10.01 x 3.35mm; *estimated total diamond weight: 1.30cts; size: 6 3/4*

\$20,000 - 30,000

Accompanied by AGL report #1092777 dated June 8, 2018, stating the Emerald as: Natural, Colombian origin with minor traditional clarity enhancement.

Accompanied by GIA report #2161963568 dated January 29, 2015, stating the emerald as: Natural, Colombian origin, with clarity enhancement (F2).

153

AN EMERALD, DIAMOND AND 18K BI-COLOR GOLD RING

cut-cornered square step-cut emerald approximately: 7.91 x 7.54 x 5.95mm; *estimated total diamond weight: 2.00cts; size: 6*

\$3,000 - 5,000

154

A JADEITE JADE, DIAMOND AND PLATINUM RING

oval cabochon jadeite jade weighs: 6.92cts; *size: 6 1/2*

\$2,000 - 3,000

Accompanied by GIA report #2191577547, dated August 17, 2018, stating: Jadeite Jade, Natural Color, no indications of impregnation.

155

A JADEITE JADE, CHALCEDONY, BLACK ONYX, DIAMOND, WHITE GOLD AND PLATINUM BIRD BROOCH, EDWARD CHIU

signed EC for Edward Chiu; estimated total diamond weight: 8.00cts; dimensions: 4 3/4 x 4 1/4in., with removable diamond jacket.

\$5,000 - 8,000

See department for Mason Kay report.



156



159



157



158



160



156
A PAIR OF CULTURED PEARL, EMERALD, DIAMOND AND PLATINUM FROG EARRINGS, TIFFANY & CO., 1996
pearls approximately: 11.5 to 11.7mm; signed *Tiffany & Co.*; with signed box; dimensions: 1 x 3/4in. (pearls untested for origin of color)

\$6,000 - 8,000

157
AN EMERALD, DIAMOND AND WHITE GOLD RING
cut-cornered rectangular step-cut emerald approximately: 7.06 x 5.28 x 3.96mm; estimated total diamond weight: 1.30cts; size: 6 1/2

\$3,000 - 5,000

158
A DIAMOND, EMERALD AND PLATINUM ETERNITY BAND
total diamond weight: 2.81cts; size: 7

\$2,000 - 3,000

159
AN EMERALD, DIAMOND AND WHITE GOLD RING
rectangular step-cut emerald approximately: 14.30 x 11.00 x 7.70mm; estimated total diamond weight: 1.50cts; size: 9

\$2,000 - 3,000

160
A PAIR OF EMERALD, DIAMOND, PLATINUM AND 18K GOLD EAR PENDANTS
two oval mixed-cut emeralds weigh: 4.34cts and 4.21cts; total diamond weight: 1.98cts; length: 2 1/8in.

\$3,000 - 5,000



161

161
A COLORED CULTURED PEARL, DIAMOND AND 18K WHITE GOLD DOUBLE STRAND NECKLACE
 pearls approximately 8.5 to 13.0mm; *length: 17 1/2in. (pearls untested for origin of color)*

\$3,500 - 5,500

163

162

163
A PAIR OF EMERALD, DIAMOND AND PLATINUM EARRINGS
 cut-cornered rectangular step-cut emeralds approximately: 10.10 x 7.45mm; *dimensions: 9/16 x 1/4in.*

\$2,500 - 3,500

164

164
AN EMERALD, DIAMOND AND 18K WHITE GOLD RING
 octagonal step-cut emerald weighs: 16.40cts; *estimated total diamond weight: 2.58cts; size: 6*

\$5,500 - 6,500

162
AN EMERALD, DIAMOND AND 18K WHITE GOLD RING
 rectangular step-cut emerald approximately: 12.45 x 11.50 x 7.50mm; *estimated total diamond weight: 1.10cts; size: 6 1/2*

\$4,000 - 6,000

Accompanied by GIA report #2195472267 dated July 10, 2018, stating the Emerald as: Natural, Colombian origin, with clarity enhancement (F1).



165



168



166



167



169

PROPERTY FROM A CAREFREE ARIZONA ESTATE

165
A PAIR OF DIAMOND AND 14K WHITE GOLD HOOP EARRINGS, GABRIEL & CO.
signed Gabriel & Co., no. 201417; estimated total diamond weight: 1.68cts; diameter: 2in.

\$1,200 - 1,800

166
A DIAMOND AND 18K WHITE GOLD BRACELET, ITALIAN
with Italian assay marks; estimated total diamond weight: 1.80cts; gross weight approximately: 29 grams; length: 7 1/4in.

\$1,500 - 2,000

167
TWO PAIRS OF COLORED CULTURED PEARL, CULTURED PEARL, DIAMOND AND 18K WHITE GOLD EARRINGS
pearls approximately: 14.5mm to 15.0mm; estimated total diamond weight: 1.35cts; diameter: 7/8in. (pearls untested for origin of color)

\$1,000 - 1,500

168
A ROCK CRYSTAL QUARTZ, COLORED DIAMOND, DIAMOND, SAPPHIRE AND BLACK RHODIUM PLATED 18K WHITE GOLD RING, STEPHEN WEBSTER
with maker's mark; size: 6 3/4 (black diamonds untested for origin of color)

\$2,000 - 3,000

169
A ROCK CRYSTAL QUARTZ, DIAMOND, SHAGREEN, SILVER AND 18K WHITE GOLD CUFF, STEPHEN WEBSTER
signed SW with maker's mark; diameter: 2 1/4in., width: 2 1/4in.

\$3,000 - 5,000



170



172



173



171

170
A PAIR OF DIAMOND AND RHODIUM PLATED 18K WHITE GOLD EAR PENDANTS
total diamond weight: 6.98cts; gross weight approximately: 33 grams; dimensions: 2 1/2 x 1in.

\$3,000 - 5,000

172
A RUBELLITE, DIAMOND, RUBY, AND 18K WHITE GOLD RING
oval cabochon rubellite approximately: 24.71 x 16.32mm; size: 7

\$1,200 - 1,800

173
A COLLECTION OF THREE DIAMOND AND WHITE GOLD ETERNITY BANDS
estimated total diamond weight: 4.05cts; sizes: 3 1/4 and 3 1/2

\$2,000 - 3,000

171
A DIAMOND AND RHODIUM PLATED GOLD COLLAR
estimated total diamond weight: 6.45cts; length: 12 1/2in. on velvet band (adjustable)

\$2,500 - 3,500



174



175



176



177



178

174
**A PAIR OF DIAMOND AND RHODIUM
PLATED GOLD HOOP EARRINGS**
*total diamond weight: 1.75cts; diameter: 2
5/8in.*

\$1,200 - 1,800

175
**A COLORED DIAMOND AND 18K WHITE
GOLD RING, ITALIAN**
*with Italian assay marks; size: 7 (brown and
black diamonds untested for origin of color)*

\$1,000 - 1,500

176
**A PAIR OF DIAMOND AND WHITE GOLD
HALF HOOP EARRINGS**
*estimated total diamond weight: 1.65cts;
length: 1 5/8in.*

\$1,800 - 2,500

177
**A COLORED DIAMOND, DIAMOND AND
RHODIUM PLATED 18K ROSE GOLD RING**
*total diamond weight: 5.93cts; size: 7 (yellow
and black diamonds untested for origin of
color)*

\$1,200 - 1,800

178
**A SET OF THREE COLORED DIAMOND,
DIAMOND AND 18K WHITE GOLD
BANGLES**
*estimated total diamond weight: 9.60cts;
diameters: 2 3/8in. (black and brown
diamonds untested for origin of color)*

\$7,000 - 9,000



179



180



182



181

179
A DIAMOND AND 18K WHITE GOLD BAND
total diamond weight: 1.73cts; size: 7 3/4

\$1,000 - 1,500

180
A PAIR OF DIAMOND AND 18K WHITE GOLD EAR PENDANTS
two center asscher-cut diamonds weigh: 3.05 and 3.01cts; length: 1 1/8in.

\$15,000 - 20,000

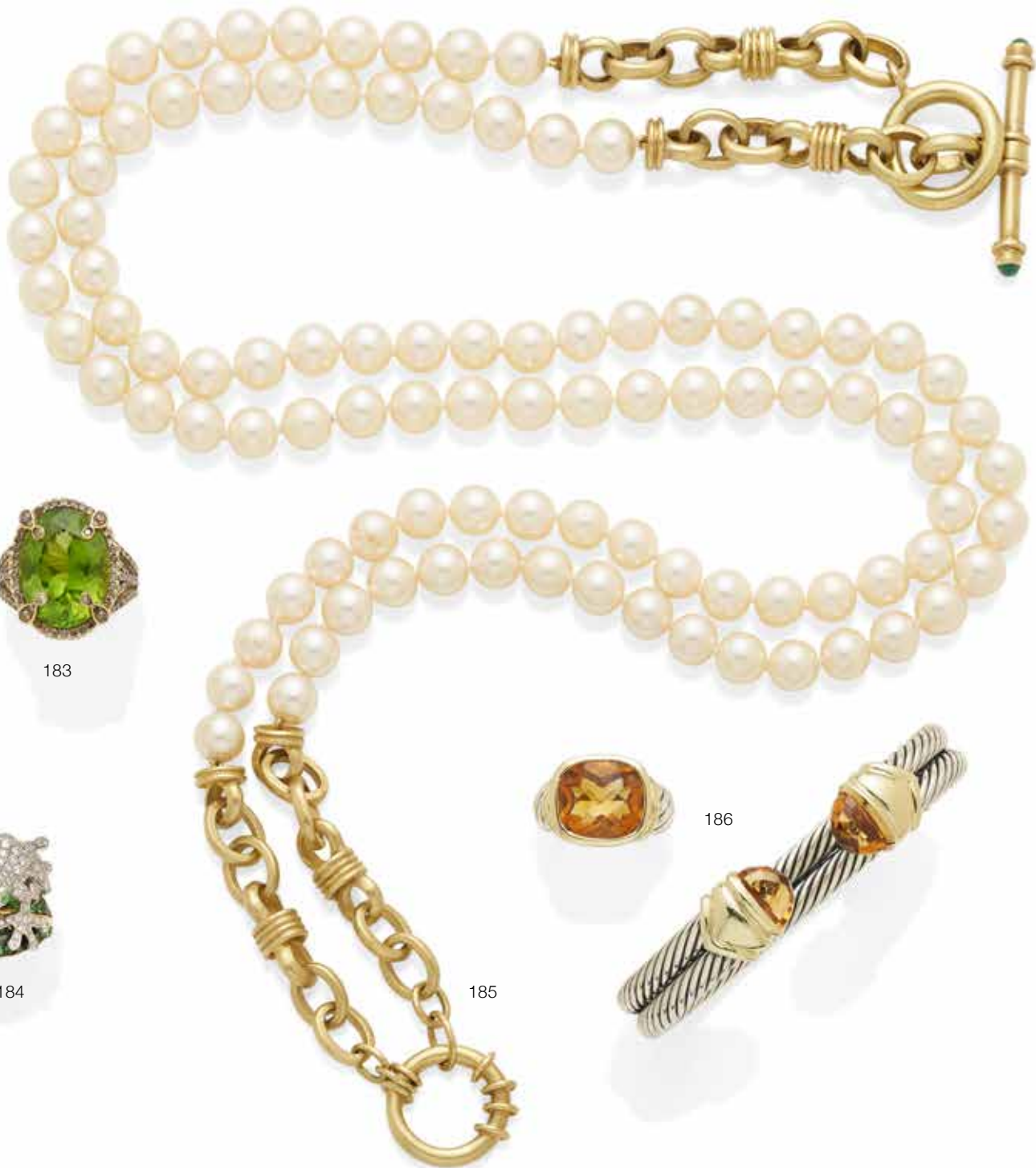
See department for GIA reports.

181
A DIAMOND AND 18K WHITE GOLD MALTESE CROSS PENDANT NECKLACE
total diamond weight: 4.33cts; gross weight approximately: 39 grams; length: 45 1/4in.

\$5,000 - 7,000

182
A DIAMOND, CERAMIC AND STAINLESS STEEL 'J12' BRACELET WRISTWATCH WITH DATE, CHANEL
quartz movement; with one extra link; case, dial and movement signed, case stamped ZM 23077; case diameter: 37mm; length: 6 1/4in.

\$3,000 - 5,000



183



184



186



185



183

A PERIDOT, COLORED DIAMOND AND GOLD RING

oval mixed-cut peridot approximately: 18.04 x 14.44 x 9.60mm; size: 6 1/4 (colored diamonds untested for origin of color)

\$3,000 - 5,000

184

A TSAVORITE GARNET, DIAMOND AND 18K BI-COLOR GOLD FROG RING, CELLINI

signed Cellini with maker's mark; estimated total diamond weight: 2.75cts; size: 7 3/4

\$1,200 - 1,800

185

A CULTURED PEARL, EMERALD AND GOLD NECKLACE

pearls approximately: 8.1mm to 8.3mm; lengths: 23in. to 45in.

\$2,500 - 3,500

186

A CITRINE, STERLING SILVER AND 14K GOLD CUFF AND RING SET, DAVID YURMAN

signed D. Yurman with maker's marks; gross weight approximately: 52 grams; cuff diameter: 2 1/4in., ring size: 7

\$1,000 - 1,500



187



188



189



187

A BI-COLOR GOLD PANTHER BAND

size: 8 1/2

\$2,000 - 3,000

188

A GLASS INTAGLIO AND 18K GOLD NECKLACE WITH A PAIR OF 18K GOLD EARCLIPS, KIESELSTEIN CORD, 1984

signed Kieselstein Cord with maker's marks; gross weight approximately: 232 grams; ear clip dimensions: 1 x 5/8in., necklace length: 17 1/2in.

\$7,000 - 9,000

189

A SMOKY QUARTZ, DIAMOND, 18K GOLD AND STERLING SILVER RING AND HINGED BANGLE SET, DAVID YURMAN

signed D. Yurman with maker's marks; gross weight approximately: 97 grams; bangle diameter: 2 3/8in., ring size: 8

\$1,200 - 1,800



192

190



191



193

190

A PINK SAPPHIRE, DIAMOND, 14K GOLD AND STERLING SILVER COLLAR, DAVID YURMAN

signed D.Y.; gross weight approximately: 108 grams; length: 16in.

\$1,500 - 2,000

191

A PRASIOLITE, DIAMOND AND 14K GOLD RING

oval mixed-cut prasiolite approximately: 24.69 x 15.77mm; estimated total diamond weight: 1.25cts; size: 7

\$1,200 - 1,800

192

A DIAMOND AND 18K ROSE GOLD HINGED BANGLE, ROBERTO COIN

signed R Coin; estimated total diamond weight: 3.30cts; gross weight approximately: 54 grams; diameter: 2 1/2in.

\$3,000 - 5,000

193

A COLORED DIAMOND, GOLD AND SILVER CUFF

estimated total diamond weight: 2.25cts; gross weight approximately: 38 grams; diameter: 2 1/4in. (brown diamonds untested for origin of color)

\$2,500 - 3,500



194

194
A COLORED DIAMOND AND 14K ROSE GOLD RING
estimated total diamond weight: 1.00ct; size: 6 3/4 (brown diamonds untested for origin of color)

\$800 - 1,000

195
A DIAMOND, COLORED DIAMOND AND 18K ROSE GOLD RING, STAURINO FRATELLI, ITALIAN
signed Staurino Fratelli, no. 676495, with Italian assay and maker's marks; estimated total diamond weight: 2.55cts; size: 6 3/4 (brown diamonds untested for origin of color)

\$1,000 - 1,500

195

196
A DIAMOND AND 18K GOLD BRACELET
estimated total diamond weight: 6.20cts; gross weight approximately: 39 grams; length: 8in.

\$2,000 - 3,000

197
A DIAMOND AND 18K WHITE GOLD BRACELET
estimated total diamond weight: 6.20cts; gross weight approximately: 40 grams; length: 8in.

\$2,000 - 3,000

198

198
AN 18K ROSE GOLD AND STAINLESS STEEL 'SERPENTI TUBOGAS' WRISTWATCH, BULGARI
quartz movement; case, dial and movement signed; case stamped SP35 SPG PO 4041; case width: 25mm

\$3,000 - 5,000

196

197



199



200



201



202



199
AN 18K GOLD HINGED CUFF, DAVID YURMAN
signed D.Y. with maker's mark; weighing approximately: 56 grams; diameter: 2 1/4in.

\$1,500 - 2,000

200
A CULTURED PEARL, DIAMOND AND 14K BI-COLOR GOLD NECKLACE
pearls approximately: 7.9 to 8.8mm; estimated total diamond weight: 3.90cts; length: 16in.

\$1,500 - 2,000

201
A GEM-SET 18K GOLD BRACELET
gross weight approximately: 57 grams; length: 7 3/4in.

\$1,500 - 2,000

202
A PAIR OF CULTURED PEARL, STERLING SILVER AND GEM-SET 14K GOLD HINGED CUFFS WITH A PAIR OF STERLING SILVER AND GEM-SET 14K GOLD EAR CLIPS, DAVID YURMAN
both signed D. Yurman; gross weight approximately: 115 grams; cuff diameters: 2 3/5in.; ear clip dimensions: 1 1/4 x 1 1/8in.

\$1,200 - 1,800



203



204



205



206

203
**A TURQUOISE AND 18K GOLD RING, DI
MODOLO**

*signed Di Modolo with maker's marks; size:
7 3/4*

\$1,200 - 1,800

204
**AN 18K GOLD LOCKET ON 18K GOLD
BEADED CHAIN, TIFFANY & CO.**

*with added diamond-set silver bail; signed
Tiffany & Co., New York; gross weight
approximately: 39 grams; length: 17in.*

\$1,200 - 1,800

205
**A GILT, STEEL 'MEDOR' WRISTWATCH,
HERMES**

*quartz movement; case, dial and movement
signed; case stamped ME1.201 808277;
case width: 24mm*

\$1,000 - 2,000

206
**A COLLECTION OF NINE DIAMOND AND
GOLD BANGLES**

*gross weight approximately: 78 grams;
diameters: 2 3/5 to 2 3/4in.*

\$1,500 - 2,000



208



207



209

210

207
A SAPPHIRE, RUBY, DIAMOND AND 18K GOLD 'TRINITY' RING, CARTIER
signed Cartier, no. 928766; size: 6

\$2,000 - 3,000

208
A DIAMOND AND 18K GOLD 'NEUF' BRACELET WRISTWATCH, MELLERIO DITS MELLER
quartz movement; with an extra bracelet link; case, dial, and movement signed, case numbered 380-294; estimated total diamond weight: 1.15cts; gross weight approximately: 94 grams; case width: 24mm; length: 6 1/2in.

\$2,000 - 3,000

209
A DIAMOND AND 18K BI-COLOR GOLD LINE BRACELET
no. 143; estimated total diamond weight: 1.95cts; length: 7 1/2in.

\$2,000 - 3,000

210
A COLLECTION OF DIAMOND, COLORED DIAMOND, QUARTZ, SILVER AND GOLD JEWELRY
comprising nine bangles and ring; five bangles and ring signed David Yurman; gross weight approximately: 155 grams; bangle diameters: 2 1/2in., ring size: 6 3/4 (black diamonds untested for origin of color)

\$2,000 - 3,000



211



213

212



214

211
A SODALITE AND 18K GOLD HINGED CUFF WITH AN 18K GOLD HINGED BANGLE, LALAOUNIS, GREEK
with maker's marks; gross weight approximately: 72 grams; cuff diameter: 2 1/2in.; bangle diameter: 2 1/4in.

\$1,800 - 2,500

212
A DIAMOND AND HIGH KARAT GOLD NECKLACE, GURHAN
with maker's marks, no. NK464-0990; length: 18in.

\$1,200 - 1,800

213
A DIAMOND AND 24K GOLD PRETZEL PENDANT, YOSSI HARARI
signed Yossi; gross weight approximately: 26 grams; dimensions: 2 x 1 5/8in.

\$3,000 - 5,000

214
A 18K BI-COLOR GOLD 'ALGAMACHRON' BRACELET WRISTWATCH, BUCCELLATI, ITALIAN
quartz movement; case, dial and movement signed; case no. 2212 8400; gross weight approximately: 156.5 grams; case width: 29mm; length 7in.

\$3,000 - 5,000

Tony Duquette: An American Design Icon



215



216

215

A JADEITE JADE, DIAMOND AND 18K WHITE GOLD RING, TONY DUQUETTE

signed Tony Duquette; estimated total diamond weight: 2.00cts; size: 8

\$7,000 - 9,000

PROPERTY OF VARIOUS OWNERS

216

A SMOKY QUARTZ AND GILT METAL BRACELET, ATTRIBUTED TO TONY DUQUETTE, CIRCA 2000

cut-cornered rectangular step-cut smoky quartz approximately: 33.60 x 32.10 x 21.19mm to 24.71 x 20.72 x 8.29mm; unsigned; length 8 1/4in.

\$3,000 - 5,000

This bracelet was part of Tony Duquette's 'Talismans of Power' Collection created in 2000, and was also worn in the Paris fashion show for Balmain, while Oscar de la Renta lead the fashion house.

Tony Duquette is a celebrated design icon for his work in many genres including costume and set design, interior design and jewelry. First discovered by socialite Lady Elsie de Wolfe Mendl in the early 1940s, he quickly became a leading designer in Los Angeles and globally. Through Sir Charles and Lady Mendl's patronage, Duquette amassed an impressive client list which included the Hollywood elite, fashion icons and European royalty. Throughout his career he had a passion for jewelry design and continued to create large and impressive pieces until his death. Today his legacy is carried on by Hutton Wilkinson who worked with Duquette for thirty years and continues to produce jewelry and home furnishings inspired by the designs he and Duquette created together.





217



221



218



219



220



222



223



224

217
A SAPPHIRE AND 18K BI-COLOR RING, BUCCELLATI

signed M. Buccellati; size: 6 1/2

\$2,000 - 3,000

218
A PAIR OF 18K GOLD EAR CLIPS, BULGARI, ITALIAN, CIRCA 1970
signed Bvlgari, with Italian gold mark; gross weight approximately: 24 grams; dimensions: 1 x 1/2in.

\$2,000 - 3,000

219
AN 18K GOLD LONG CHAIN WITH REMOVABLE CLIP/PENDANT
weighing approximately: 157 grams; pendant dimensions: 3 x 3in., chain length: 24in.

\$4,000 - 6,000

220
A CAT'S EYE MOONSTONE, DIAMOND AND 18K GOLD RING, MARIO BUCCELLATI, ITALIAN, CIRCA 1960
signed Mario Buccellati; size: 7 1/2

\$3,000 - 5,000

221
A PAIR OF 18K BI-COLOR GOLD LEAF EAR CLIPS, BUCCELLATI, ITALIAN
signed M. Buccellati, with Italian assay marks; with signed box; dimensions: 1 x 1in.

\$1,800 - 2,500

222
AN 18K GOLD WRISTWATCH WITH LATER-ADDED INTEGRAL BRACELET, PATEK PHILIPPE RETAILED BY GÜBELIN
mechanical movement; case, dial and movement signed Patek Philippe; movement no. 782338, case no. 2606689 and Ref. 2593; gross weight approximately: 64 grams; diameter: 32mm; length: 6 3/4in.

\$2,000 - 3,000

223
A PAIR OF DIAMOND AND 18K GOLD CUFFLINKS, CARTIER
signed Cartier; with signed box; dimensions: 1 x 3/4in.

\$1,500 - 2,500

224
A YELLOW SAPPHIRE, SAPPHIRE, DIAMOND AND GOLD RING
cut-cornered rectangular step-cut yellow sapphire approximately: 15.41 x 12.46 x 7.24mm; size: 7 1/2

\$3,000 - 5,000



225

226



227

228

225

A DIAMOND AND 18K GOLD NECKLACE

*estimated total diamond weight: 1.80cts;
gross weight approximately: 47 grams;
length: 16in.*

\$2,500 - 3,500

226

A GROUP OF NINE DIAMOND, WHITE GOLD AND YELLOW GOLD ETERNITY BANDS

*estimated total diamond weight: 9.20cts;
size: 7*

\$2,800 - 3,500

227

AN 18K BI-COLOR GOLD BRACELET, TIFFANY & CO.

signed Tiffany & Co.; gross weight approximately 136.6 grams; length: 7 7/8in.

\$4,000 - 6,000

228

AN AMETHYST, RUBY, DIAMOND, BLACK ONYX AND 18K ROSE GOLD RING

oval mixed-cut cabochon amethyst approximately: 16.54 x 13.27 x 10.66mm; size: 7 1/2

\$1,800 - 2,500



229

230

231

232

233

229

A GREEN TOURMALINE, DIAMOND AND 18K BI-COLOR GOLD RING

rectangular step-cut green tourmaline approximately: 20.9 x 7.15 x 5.7mm; estimated total diamond weight: 1.25cts; size: 7 1/4

\$2,000 - 3,000

230

A WATERMELON TOURMALINE, TOURMALINE, DIAMOND, 18K GOLD AND PLATINUM RING

cut-cornered rectangular step-cut watermelon tourmaline approximately: 29.00 x 11.56 x 6.82mm; total diamond weight: 1.00ct; size: 6 3/4

\$3,000 - 5,000

231

A DIAMOND AND 14K BI-COLOR GOLD COLLAR, DAVID YURMAN

signed D. Yurman; gross weight approximately: 59 grams; length: 14in.

\$2,200 - 2,800

232

A DIAMOND AND PLATINUM INVISIBLY-SET PENDANT ON 18K WHITE GOLD CHAIN

estimated total diamond weight: 5.00cts; pendant dimensions: 1 7/8 x 1in; chain length: 18in.

\$2,000 - 3,000

233

A PAIR OF DIAMOND AND WHITE GOLD INVISIBLY-SET EAR PENDANTS

estimated total diamond weight: 13.00cts; length: 1 3/8in.

\$5,000 - 10,000



234



236



235



237



238



239

234

A DIAMOND AND PLATINUM RING

center emerald-cut diamond weighs:
1.30cts; size: 5 3/4

\$4,000 - 6,000

Accompanied by GIA report #5193836916 dated April 22, 2015, stating the diamond as: D color, VS2 clarity.

235

A COLORED DIAMOND AND 14K WHITE GOLD RING

estimated total diamond weight: 1.25cts;
size: 6 (colored diamonds untested for origin of color)

\$2,500 - 3,500

236

A COLORED DIAMOND, DIAMOND AND 14K WHITE GOLD RING

estimated total diamond weight: 1.10cts;
size: 6 1/4 (colored diamonds untested for origin of color)

\$2,000 - 4,000

237

A PAIR OF FANCY COLOR DIAMOND, DIAMOND AND BI-COLOR GOLD EAR PENDANTS

length: 1 1/16in.

\$16,000 - 20,000

Accompanied by GIA report #2125394060 dated July 29, 2010, stating the 0.53ct diamond as: Natural Fancy Intense Yellowish Orange.

Accompanied by GIA report #5151444629 dated May 10, 2013, stating the 0.69ct diamond as: Natural Fancy Intense Yellowish Orange.

238

A DIAMOND AND PLATINUM LINE BRACELET

estimated total diamond weight: 4.40cts;
length: 7 1/2in.

\$2,200 - 2,800

239

A COLORED DIAMOND, DIAMOND AND WHITE GOLD CROSS PENDANT

estimated total diamond weight: 3.55cts;
dimensions: 2 5/8 x 1 5/8in. (yellow diamonds untested for origin of color)

\$8,000 - 12,000



240

240
A PAIR OF FANCY COLOR DIAMOND, DIAMOND, 18K GOLD AND PLATINUM EAR PENDANTS
length: 2 1/8in.

\$2,000 - 3,000

See department for four GIA Reports.

241

A FANCY COLOR DIAMOND, DIAMOND, 18K GOLD AND PLATINUM RING
size: 6 1/4

\$1,800 - 2,500

Accompanied by GIA report #2175099779 dated April 1, 2015, stating the 0.61ct diamond as: Natural Fancy Yellow, VS2 clarity.

241

Accompanied by GIA report #2173069881 dated March 17, 2015, stating the 0.85ct diamond as: Natural Fancy Light Yellow, SI1 clarity.

242

A DIAMOND AND 18K WHITE GOLD LONG CHAIN
total diamond weight: 7.36cts; length: 60in.

\$3,000 - 5,000

243

A PAIR OF DIAMOND AND 18K WHITE GOLD EAR PENDANTS
estimated total diamond weight: 11.35cts; length: 2 1/2in.

\$5,500 - 6,500

243

242

244

244

AN ALEXANDRITE, DIAMOND AND 14K WHITE GOLD RING
 cushion brilliant step-cut alexandrite weighs: 1.18cts; *size: 6 1/4*

\$2,000 - 3,000

Accompanied by GIA report #1192231369 dated April 6, 2018, stating the Alexandrite as: Natural, Green-Yellow to Orangi-Brown color change.



245



248



247



246

245

A COLORED DIAMOND, DIAMOND, RUBY AND 14K WHITE GOLD BUTTERFLY NECKLACE

estimated total diamond weight: 5.75cts; length: 18in. (colored diamonds untested for origin of color)

\$2,000 - 3,000

PROPERTY OF A LOS ANGELES COLLECTOR

246

A GREEN TOURMALINE, DIAMOND AND WHITE GOLD RING

cushion mixed-cut tourmaline approximately: 10.36 x 8.91 x 6.12mm; estimated total diamond weight: 1.00ct; size: 6 1/2

\$1,000 - 1,500

PROPERTY OF VARIOUS OWNERS

247

A YELLOW SAPPHIRE, DIAMOND AND 18K WHITE GOLD RING

oval double cabochon yellow sapphire weighs: 16.28cts; size: 6 3/4

\$7,000 - 10,000

Accompanied by GRS report #GRS2-18-058945 dated May 30, 2018, stating the yellow sapphire as: Natural, Sri Lankan origin.

248

A PAIR OF DIAMOND AND WHITE GOLD EAR PENDANTS

estimated total diamond weight: 4.00cts; length: 1 1/4in.

\$2,500 - 3,500

249

NO LOT



250

250
A COLORED DIAMOND, DIAMOND AND 18K WHITE GOLD NECKLACE AND EAR PENDANT SET
estimated total diamond weight: 28.35cts; necklace length: 16 1/2in.; earring length: 1 1/4in. (black diamonds untested for origin of color)

\$3,000 - 5,000



251

251
A DIAMOND AND PLATINUM RING
cut-cornered triangular step-cut diamond weighs: 4.34cts; size: 5 1/2

\$3,500 - 5,500

Accompanied by GIA report #5151506795 dated June 19, 2013, stating the diamond as: I color, I1 clarity.



253



252

252
A FANCY COLOR DIAMOND, DIAMOND AND WHITE GOLD RING
pear modified brilliant-cut Fancy Black diamond weighs: 2.65cts; estimated total diamond weight: 3.00cts; size: 6 1/2

\$2,000 - 3,000

Accompanied by GIA report #2193201981 dated March 28, 2018, stating the diamond as: Natural Fancy Black.

253
A DIAMOND AND PLATINUM NECKLACE
estimated total diamond weight: 2.00cts; length: 18 1/2in.

\$1,500 - 2,500



254



256



257



255



258

254

A DIAMOND AND 18K WHITE GOLD RING
total diamond weight: 2.31cts; size: 7

\$2,500 - 3,500

255

A PAIR OF DIAMOND, RUBY AND 18K WHITE GOLD HOOP EARRINGS

total diamond weight: 4.99cts; total ruby weight: 4.87cts; length: 1 3/4in.

\$3,000 - 5,000

256

A TANZANITE, LACQUERED ALUMINUM AND 18K WHITE GOLD FLOWER RING, SABBADINI

signed Sabbadini; size: 7 1/2

\$2,000 - 3,000

257

A STAR SAPPHIRE, DIAMOND AND 14K WHITE GOLD RING

oval cabochon star sapphire weighs: 12.24cts; size: 6 1/4

\$5,000 - 7,000

Accompanied by AGL report #1096055 dated October 15, 2018, stating the star sapphire as: Natural, Burmese origin, no indication of heat enhancement.

PROPERTY OF A LAGUNA BEACH COLLECTION

258

A DIAMOND AND RHODIUM PLATED GOLD CUFF

estimated total diamond weight: 5.40cts; gross weight approximately: 211 grams; width: 1 1/2in.; diameter: 2 1/4in.

\$5,000 - 7,000

PROPERTY OF VARIOUS OWNERS

259

A PAIR OF SAPPHIRE, RUBY, EMERALD, DIAMOND AND PLATINUM EAR PENDANTS

length: 1 5/8in.

\$3,000 - 5,000



259

260



263



262



261

260
A SAPPHIRE, DIAMOND AND 18K WHITE GOLD NECKLACE, FRENCH
with French assay mark; estimated total diamond weight: 1.54cts; length: 15 3/4in.

\$12,000 - 18,000

261
A PAIR OF DIAMOND AND 18K WHITE GOLD EAR PENDANTS
total diamond weight: 5.30cts; length: 2in.

\$1,800 - 2,500

262
A RUBY, DIAMOND AND PLATINUM RING
cushion mixed-cut ruby weighs: 4.11cts; size: 5 3/4

\$4,000 - 6,000

Accompanied by AGL report #1095467 dated October 11, 2018, stating the ruby as: Natural, Burmese origin, no indications of heat enhancement.

263
A RUBY, DIAMOND, 18K GOLD AND PLATINUM RING
oval mixed-cut ruby weighs: 2.99cts; size: 6

\$1,800 - 2,500

Accompanied by AGL report #1095468 dated October 11, 2018, stating the ruby as: Natural, Burmese origin, no indications of heat enhancement.



264

265

266

267

264
A SET OF THREE DIAMOND AND PLATINUM ETERNITY BANDS
estimated total diamond weight: 4.70cts; sizes: 7 1/4 and 7 1/2

\$3,000 - 5,000

265
A PURPLE STAR SAPPHIRE, DIAMOND AND 18K WHITE GOLD RING
oval double cabochon purple star sapphire weighs: 11.41cts; estimated total diamond weight: 2.70cts; size: 6 3/4

\$7,000 - 10,000

Accompanied by GRS report #GRS2018-058946 dated May 30, 2018, stating the purple star sapphire as: Natural, Sri Lankan origin.

266
A CULTURED PEARL, DIAMOND AND 18K WHITE GOLD NECKLACE AND BRACELET SET
pearls approximately: 7.5 to 7.6mm; estimated total diamond weight: 1.10cts; necklace length: 16 1/2in., bracelet length: 7 1/2in.

\$2,000 - 3,000

267
A SAPPHIRE, DIAMOND AND PLATINUM RING
oval modified brilliant step-cut sapphire weighs: 5.21cts; size: 7 1/4

\$5,000 - 7,000

Accompanied by GIA report #1192432668 dated June 15, 2018, stating the sapphire as: Natural, no indications of heat enhancement.



271



268



272



269

270

268

A MULTI-COLORED SAPPHIRE, DIAMOND AND 18K WHITE GOLD BUTTERFLY RING

total sapphire weight: 3.88cts; size: 6 1/2

\$2,500 - 3,500

PROPERTY FROM A PARADISE VALLEY, AZ ESTATE

269

A MORGANITE, DIAMOND AND 18K WHITE GOLD RING

oval mixed-cut morganite approximately: 19.53 x 17.23 x 11.40mm; size: 4

\$4,000 - 6,000

PROPERTY OF ANOTHER OWNER

270

A DIAMOND AND PLATINUM NECKLACE

estimated total diamond weight: 6.00cts; length: 16 3/4in.

\$3,500 - 5,500

PROPERTY OF A LOS ANGELES COLLECTOR

271

A DIAMOND AND PLATINUM RING SET

emerald-cut diamond approximately: 1.25cts; size: 5 3/4

\$5,000 - 7,000

PROPERTY OF VARIOUS OWNERS

272

A SAPPHIRE, DIAMOND AND PLATINUM RING

cushion brilliant step-cut sapphire weighs: 5.13cts; estimated total diamond weight: 1.05cts; size: 7

\$5,000 - 7,000

Accompanied by GIA report #5192432736 dated June 15, 2018, stating the sapphire as: Natural, no indications of heat enhancement.



273

273
A PURPLE STAR SAPPHIRE, DIAMOND AND PLATINUM RING
 oval double cabochon purple star sapphire approximately: 18.00 x 14.70 x 14.80mm; signed N&T; estimated total diamond weight: 1.75cts; size: 5 1/4
\$6,000 - 8,000

275



274
A DIAMOND, PLATINUM AND 18K WHITE GOLD BRACELET WRISTWATCH, JAEGER-LECOULTRE, CIRCA 1940
 mechanical movement; platinum watch case with 18k white gold bracelet; case no. 120848; estimated total diamond weight: 1.04cts; diameter: 13mm; length: 6 3/4in.
\$4,000 - 6,000

277



276
A PLATINUM KEYLESS WIND OPEN FACE POCKET WATCH WITH KNIFE EDGE, CARTIER, CIRCA 1920
 silvered dial, black Roman numerals, black outer minute track, blued steel spade hands; signed Cartier, movement signed European Watch and Clock Co; size: 49mm
\$4,000 - 6,000

277
A DIAMOND AND PLATINUM RING
 transitional round brilliant-cut diamond approximately: 1.40cts; estimated remaining diamond weight: 1.30cts; size: 6 1/4
\$4,000 - 6,000

(front)

(back)



278



279



280



281

278
A PAIR OF DIAMOND, SAPPHIRE AND PLATINUM EAR PENDANTS
two round brilliant-cut diamonds weighing: 1.46cts. and 1.24cts; length: 2 3/8in.

\$4,000 - 6,000

279
A DIAMOND, SAPPHIRE AND 18K WHITE GOLD BRACELET
estimated total diamond weight: 9.00cts; gross weight approximately: 29 grams; length: 7in.

\$3,000 - 5,000

280
AN ART DECO ROCK CRYSTAL QUARTZ, DIAMOND AND 18K WHITE GOLD BROOCH, CIRCA 1930
round cabochon rock crystal quartz approximately: 22.03 x 21.99 x 7.57mm; with French import mark and maker's mark; estimated total diamond weight: 3.38cts; size: 6 3/4

\$2,000 - 4,000

281
AN ART MODERNE SAPPHIRE, EMERALD AND PLATINUM RING, CIRCA 1935
size: 5

\$3,000 - 5,000



282



286



289



283



288



284



287



285



290



291



292

282
A DIAMOND AND PLATINUM PENDANT
 with white gold bale; *estimated total diamond weight: 2.55cts; length: 2 1/2in.*

\$1,500 - 2,500

283
AN ART DECO ROCK CRYSTAL QUARTZ, BLACK ONYX, DIAMOND, GOLD AND PLATINUM JABOT, CIRCA 1920
length: 2 7/8in.

\$1,000 - 1,500

284
AN ART DECO DIAMOND AND PLATINUM RING, CIRCA 1925
estimated total diamond weight: 1.85cts; size: 3 1/2

\$1,500 - 2,500

285
A DIAMOND AND WHITE GOLD BRACELET
 center transitional round brilliant-cut diamond approximately: 1.25cts; *estimated remaining diamond weight: 3.55cts; gross weight approximately: 25 grams; length: 7 1/8in.*

\$4,000 - 6,000

286
AN ART DECO JADEITE JADE, DIAMOND AND PLATINUM NECKLACE, CIRCA 1920
 center old European-cut diamond approximately: 1.30cts; *estimated total remaining diamond weight: 1.00ct; length: 20 1/2in.*

\$3,000 - 5,000

287
AN ART DECO DIAMOND AND PLATINUM BROOCH, FRENCH, CIRCA 1925
with French assay marks; estimated total diamond weight: 4.20cts; dimensions: 2 1/4 x 1 1/8in.

\$3,000 - 5,000

288
A DIAMOND AND PLATINUM RING
estimated total diamond weight: 2.20cts; size: 7 1/2

\$2,000 - 3,000

289^Y
A CORAL, TURQUOISE, DIAMOND AND PLATINUM CLIP
estimated total diamond weight: 5.85cts; dimensions: 1 1/4 x 1 1/2in.

\$2,500 - 3,500

290
A DIAMOND AND PLATINUM PENDANT-NECKLACE
 with later added 14k gold chain; *estimated total diamond weight: 2.25cts; length: 18in.; pendant dimensions: 2 1/8 x 1 3/8in.*

\$1,500 - 2,500

291
AN ART DECO JADEITE JADE, DIAMOND AND PLATINUM BRACELET, CIRCA 1920
gross weight approximately: 28 grams; length: 7in.

\$4,000 - 6,000

Accompanied by Mason Kay report #180905-2883, dated September 5, 2018, stating: Natural Jadeite Jade-No Dye or polymer detected-'A'Jade.

292
A DIAMOND AND PLATINUM BROOCH
estimated total diamond weight: 5.00cts; length: 2 1/2in.

\$2,000 - 3,000



293



294



295

296



297

293

A DIAMOND AND RHODIUM PLATED SILVER TOPPED GOLD BROOCH

estimated total diamond weight: 4.45cts; dimensions: 2 7/8 x 3/4in.

\$2,000 - 3,000

294

A STAR RUBY, DIAMOND AND PLATINUM RING

oval cabochon ruby weighs: 2.87cts; size: 5 3/4

\$3,000 - 5,000

Accompanied by AGL report #1094449 dated August 14, 2018, stating the star ruby as: Natural, Burmese origin, no indications of heat enhancement.

295

AN ART DECO DIAMOND, RUBY AND PLATINUM BRACELET, CIRCA 1925

estimated total diamond weight: 4.50cts; length: 7in.

\$3,000 - 5,000

296

A DIAMOND AND PLATINUM-TOPPED GOLD BRACELET

estimated total diamond weight: 6.75cts; length: 7 1/4in.

\$4,000 - 6,000

297

A DIAMOND, EMERALD AND PLATINUM RING

center old European-cut diamond approximately: 1.45cts; estimated remaining diamond weight: 2.05cts; size: 5 1/4

\$4,000 - 6,000

298

A PAIR OF DIAMOND AND PLATINUM-TOPPED GOLD EARRINGS AND BROOCH SET

estimated total diamond weight: 1.45cts; earring dimensions: 1 3/8 x 1/8in., brooch dimensions: 2 1/2 x 1/4in.

\$1,500 - 2,500



298

299

302

300

301

299
A JADEITE JADE, DIAMOND AND PLATINUM RING
 oval cabochon jadeite jade approximately:
 12.11 x 8.68 x 3.66mm; size: 9

\$2,000 - 3,000

Accompanied by Mason Kay report #181001-721, dated October 11, 2018, stating: Natural Jadeite Jade - No Dye or Polymer Detected - 'A' Jade.

300
A DIAMOND AND 14K WHITE GOLD BRACELET
 estimated total diamond weight: 4.40cts;
 size: 7 1/8in.

\$2,000 - 3,000

PROPERTY FROM THE ESTATE OF MAE SUE TALLEY

301
A GRADUATED PEARL NECKLACE WITH DIAMOND AND PLATINUM CLASP, VAN CLEEF & ARPELS, NEW YORK
 pearls approximately: 3.0 to 5.1mm; signed VCA NY, no.1326; length: 18 3/4in.

\$3,000 - 5,000

Accompanied by GIA report #5192735909, dated November 1, 2018 stating there are 75 Natural Saltwater pearls, Pinctada species, along with 26 Cultured and 1 Freshwater pearl.

PROPERTY OF VARIOUS OWNERS

302
A PAIR OF CULTURED PEARL, DIAMOND AND PLATINUM EAR PENDANTS
 pearls approximately: 1.8mm to 4.2mm;
 estimated total diamond weight: 2.40cts;
 length: 3 1/4in.

\$2,000 - 3,000



303



305



304



306

303
A LATE 19TH CENTURY NATURAL PEARL, DIAMOND AND SILVER-TOPPED GOLD BROOCH, FRENCH
pearls approximately: 8.5 to 8.8mm; no. 3616 with French assay mark; estimated total diamond weight: 5.00cts; dimensions: 2 x 1 1/2in.

\$4,000 - 6,000

Accompanied by GIA report #1196660223 dated September 26, 2018, stating the pearls as: Natural Saltwater with no indications of treatment.

304
A DIAMOND, RHODIUM PLATED SILVER-TOPPED GOLD AND 14K WHITE GOLD RING
center old European-cut diamond approximately: 1.30cts; estimated remaining diamond weight: 3.30cts; size: 7 1/2

\$2,500 - 3,500

305
A PAIR OF CULTURED PEARL, DIAMOND AND SILVER-TOPPED GOLD EARRINGS
pearls approximately: 8.6mm and 8.4mm; estimated total diamond weight: 2.50cts; length: 1 3/8in. (pearls untested for origin)

\$2,000 - 3,000

306
A RUBY, DIAMOND, SILVER AND GOLD CAT BROOCH
estimated total diamond weight: 2.50cts; gross weight approximately: 26 grams; dimensions: 2 1/2 x 1 1/2in.

\$1,200 - 1,500





307

307
**A DIAMOND, GOLD AND SILVER
BROUCH**
*gross weight approximately: 40 grams;
dimensions: 3 1/2 x 2 5/16in.*

\$1,800 - 2,500



308

308
**A SEED PEARL, SAPPHIRE BEAD,
DIAMOND, ENAMEL, SILVER AND GOLD
TASSEL NECKLACE**
*estimated total diamond weight: 2.50cts;
length: 22in.*

\$1,800 - 2,500



309

309
**AN ENAMEL, DIAMOND AND SILVER-
TOPPED GOLD BROUCH**
dimensions: 2 x 2in.

\$2,000 - 3,000



310

310
**A PAIR OF DIAMOND, SILVER AND GOLD
 EAR CLIPS**
dimensions: 3 3/4 x 1 1/2in.
\$1,800 - 2,500

311

311
**A DIAMOND, SILVER AND GOLD
 BRACELET**
length: 7 3/4in.
\$1,800 - 2,500

312

312
**A PAIR OF RUBY, DIAMOND, SILVER AND
 GOLD EAR PENDANTS**
*estimated total diamond weight: 2.40cts;
 dimensions: 3 1/4 x 1in.*
\$1,800 - 2,500



313



314



315



316



317

313
**A SAPPHIRE AND GOLD CRESCENT
PENDANT/BROOCH**
dimensions: 1 1/2 x 1in.

\$3,000 - 5,000

314
**A DIAMOND AND 18K GOLD BRACELET,
FRENCH**
*with French assay and maker's marks;
estimated total diamond weight: 1.00ct;
gross weight approximately: 58 grams;
length: 7 1/2in.*

\$3,000 - 5,000

315
**A LATE 19TH CENTURY RUBY AND 18K
GOLD RING, CIRCA 1890**
*oval pyramidal cabochon ruby approximately:
8.20 x 7.30 x 5.91mm;
no. 256; size: 7 1/2*

\$3,000 - 5,000

Accompanied by AGL report #1091055
dated March 27, 2018, stating the ruby as:
Natural, Burmese origin, no indications of heat
enhancement.

316
**A PAIR OF DIAMOND AND GOLD EAR
PENDANTS**
*two old European-cut diamonds
approximately: 1.10cts and 0.95ct; estimated
total remaining diamond weight: 1.35cts;
length: 1 3/4in.*

\$4,000 - 6,000

317
**A DIAMOND AND GOLD PENDANT WITH
CHAIN**
*center European-cut diamond approximately:
0.90ct; estimated remaining diamond weight:
2.45cts; length: 18in.*

\$6,000 - 8,000



318

319

320

318

A DIAMOND AND GOLD RING

round brilliant-cut diamond approximately:
1.40cts; size: 6

\$1,800 - 2,500

319

**A DIAMOND AND GOLD FLOWER
PENDANT/BROOCH**

*estimated total diamond weight: 1.50cts;
diameter: 1in.*

\$1,500 - 2,500

320

**A MID 19TH CENTURY AMETHYST,
ENAMEL AND GOLD NECKLACE AND
BRACELET SET, CIRCA 1850**

oval mixed-cut amethysts approximately:
12.48 x 16.04 x 8.05mm to 16.06 x 20.74
x 12.13mm; *necklace length: 15 1/2in.,
bracelet length: 7 1/2in.*

\$3,000 - 5,000



326



327



328



321



329



323



322



325

324



330



331



332

321
AN 18K GOLD AND EMERALD LIGHTER COVER, JAMES SCHWABE FOR CARTIER
signed Cartier, no. 12258, James Schwabe; gross weight approximately: 67 grams; dimensions: 1 7/8 x 1 3/4 x 1 1/4in.

\$1,200 - 1,800

322
A SAPPHIRE AND 14K BI-COLOR GOLD CIGARETTE CASE
gross weight approximately: 171 grams; dimensions: 5 x 3 1/4in.

\$2,500 - 3,500

323
AN ENAMEL AND 18K GOLD BRACELET, TIFFANY & CO., ITALIAN
signed Tiffany, Italy (partially obscured); gross weight approximately: 75 grams; length: 6 1/2in.

\$2,000 - 4,000

324
AN 18K GOLD BRACELET, VAN CLEEF & ARPELS, FRENCH
signed VCA, no. 2V527; with French assay marks; weighing approximately: 89 grams; length: 8 1/4in.

\$3,000 - 5,000

325
A CARVED JADEITE JADE AND 14K GOLD PENDANT
length: 2 3/4in.

\$800 - 1,200

326
A LAPIS LAZULI, DIAMOND AND 18K GOLD RING
estimated total diamond weight: 1.35cts; size: 7 3/4

\$1,000 - 1,500

327
AN ENAMEL, DIAMOND AND 14K GOLD RING
size: 6 1/2

\$800 - 1,200

328
A SAPPHIRE AND 14K GOLD COMPACT, CHARLTON & CO.
signed Charleton & Co.; gross weight approximately: 72 grams; dimensions: 3 1/8 x 1 1/8in.

\$1,000 - 1,500

329
AN EMERALD, PEARL, DIAMOND, ENAMEL 800 SILVER AND 18K GOLD RING, PORTUGUESE
with Portuguese hallmarks and marker's mark; size: 8 1/2

\$800 - 1,200

330
THREE DIAMOND, CULTURED PEARL AND 14K GOLD PENDANT-CHARMS
including 'Creation of Man' and 'Birth of Venus' motifs; two signed A. Gates; gross weight: 66 grams

\$1,000 - 1,500

331
THREE RUBY, SAPPHIRE, DIAMOND AND 18K GOLD BEE BROOCHES
estimated total diamond weight: 0.85ct; lengths: 1in.

\$1,000 - 1,500

332
A GEM-SET 14K GOLD CHARM BRACELET
length: 8in.

\$2,000 - 3,000



336

337

333

335

334

333
AN 18K GOLD SAGITTARIUS PENDANT, VAN CLEEF & ARPELS, FRENCH
signed VCA France, no. 16V9-48, with French assay mark; diameter: 1in.

\$2,000 - 3,000

334
AN AMETHYST CRYSTAL AND 18K GOLD RING, HARRY ABEND, VENEZUELA
signed Harry Abend; gross weight approximately: 43 grams; size: 7 1/2

\$800 - 1,200

335
AN 18K BI-COLOR GOLD KNOT RING, GUCCI, ITALIAN
signed Gucci, with italian assay marks, size: 6

\$800 - 1,200

336
A PAIR OF AMETHYST AND 18K GOLD EAR CLIPS AND AN AMETHYST AND GOLD BEAD NECKLACE
gross weight approximately: 73 grams; necklace length: 32in.; ear clip length: 13/16in.

\$1,000 - 1,500

337
A RUBY AND 18K GOLD OCTOPUS RING, KURT WAYNE, 1969
signed KW no. 13447; gross weight approximately: 35 grams; size: 7 3/4

\$1,200 - 1,800



338



339



340



341



342

338
TWO 18K GOLD BROOCHES
with diamond and ruby accents; gross weight approximately: 50 grams; lengths: 2in. and 1 1/2in.

\$800 - 1,200

339
A DIAMOND, PLATINUM AND 18K GOLD RING
estimated total diamond weight: 5.75cts; gross weight approximately: 34 grams; size: 8 1/2

\$4,000 - 6,000

340
A BI-COLOR GOLD CHARM BRACELET
weighing approximately: 105 grams; length: 7 1/2in.

\$1,800 - 2,500

341
A FRESHWATER PEARL, DIAMOND AND 14K GOLD RING
size: 6 1/4

\$800 - 1,200

342
A RUBY, DIAMOND AND 18K GOLD RING
oval double cabochon ruby approximately: 37.00 x 26.00 x 13.00mm; estimated total diamond weight: 1.60cts; gross weight approximately: 57 grams; size: 8

\$1,200 - 1,800



343



344



345



346

343
A DYED CHALCEDONY, ENAMEL, DIAMOND, SILVER AND 18K GOLD NECKLACE
 "Mashallah"; gross weight approximately: 57 grams; length: 22in.

\$2,000 - 3,000

344
TWO DIAMOND AND 14K BI-COLOR GOLD NECKLACES
 estimated total diamond weight: 1.40cts; lengths: 16in. and 20in.

\$1,200 - 1,800

345
A PAIR OF DIAMOND AND GOLD EAR CLIPS
 estimated total diamond weight: 2.50cts; length 3/4in.

\$2,000 - 3,000

346
AN 18K GOLD BRACELET, ARTE ORFEBRE SA, PERUVIAN
 signed Arte Orfebre Sa, reg. no. 7788; weighing approximately: 65 grams; length: 7in.

\$1,800 - 2,500

347
A 14K GOLD BRACELET
 weighing approximately: 56 grams; length: 7 1/2in.

\$1,500 - 2,000

348
A RUBY, DIAMOND AND PLATINUM RING
 oval double cabochon ruby weighs: 19.90cts; total diamond weight: 1.07cts; size: 6

\$3,000 - 5,000

Accompanied by GIA report #5182989231 dated January 11, 2018, stating the ruby as: Natural, no indications of heat enhancement.



347



348



349



351



350

**349
A RUBY, DIAMOND AND SILVER-TOPPED
14K GOLD BRACELET**

*estimated total diamond weight: 6.70cts;
gross weight approximately: 27 grams;
length: 7in.*

\$3,000 - 5,000

**PROPERTY FROM THE COLLECTION OF
WATSON POWELL, DES MOINES, IOWA**

**350
A CULTURED PEARL, RUBY AND 14K
GOLD DOUBLE STRAND NECKLACE**

*pearls approximately: 8.0 x 7.5mm; length:
36in.*

\$1,500 - 2,000

PROPERTY OF VARIOUS OWNERS

**351
A RUBY, DIAMOND AND 14K GOLD RING**
*estimated total diamond weight: 1.10cts;
size: 5*

\$2,000 - 3,000



352



353



354



355

352

A RUBY, DIAMOND AND 18K GOLD RING
carved cushion cabochon ruby weighs:
13.63cts; estimated total diamond weight:
1.80cts; size: 6

\$5,000 - 8,000

Accompanied by C. Dunaigre report
#1801913 dated January 28, 2018, stating
the ruby as: Natural, Burmese origin, no
indications of heat enhancement.

353

**A DIAMOND AND 18K BI-COLOR GOLD
BRACELET, ENGLISH, 1999**
with English hallmarks; gross weight
approximately: 29 grams; length: 7in.

\$1,000 - 1,500

354

A DIAMOND AND 18K GOLD NECKLACE
estimated total diamond weight: 1.00ct;
gross weight approximately: 62 grams;
length: 15in. with 1in. extender

\$2,000 - 3,000

355

**A PAIR OF RUBY, DIAMOND AND 14K
GOLD EAR CLIPS**
estimated total diamond weight: 2.65cts;
gross weight approximately: 31 grams;
dimensions: 1 5/8 x 1 3/8in.

\$3,000 - 5,000



356



357



358

359



360

356
**A DIAMOND AND GEM-SET RHODIUM
PLATED 18K GOLD RING, FRENCH**
with French assay mark; size: 3 3/4

\$2,000 - 3,000

357
**A DIAMOND AND GEM-SET BI-COLOR
GOLD AMERICAN FLAG BROOCH**
dimensions: 1 3/4 x 1 3/4in.

\$1,500 - 2,000

358
**A RUBY, DIAMOND AND 18K GOLD
BRACELET**
*estimated total diamond weight: 1.55cts;
length: 7in.*

\$4,000 - 7,000

359
**AN 18K GOLD MULTI-STRAND
BRACELET**
*weighing approximately: 42 grams; length:
7 1/2in.*

\$1,000 - 1,500
To be sold without reserve

360
A RUBY, DIAMOND AND 18K GOLD RING
total diamond weight: 2.83cts; size: 7

\$2,000 - 4,000



361



362



363

361
A DIAMOND, SAPPHIRE AND 18K BI-COLOR GOLD BIRD CLIP, TIFFANY & CO., FRENCH, CIRCA 1960
signed Tiffany & Co. with French assay mark; dimensions: 1 1/4 x 1in.

\$2,000 - 3,000

362
A PINK SAPPHIRE, DIAMOND, EMERALD AND GOLD FIGURAL CLIP, CIRCA 1960
gross weight approximately: 31 grams; dimensions: 2 1/8 x 1 1/2in.

\$3,000 - 5,000

363
AN 18K GOLD CIGARETTE BOX, CARTIER, 1959
inscribed "To Bobby Darin in appreciation for "Mack the Knife" and other wonderful achievements from your friends at ATCO Records" December 25, 1959; signed Cartier; weighing approximately: 192 grams; dimensions: 5 x 3 1/8in.

\$5,000 - 7,000

Singer Bobby Darin's career soared in 1958 when he signed with Atco Records (a division of Atlantic Records) and recorded "Splish, Splash," which was soon followed by "Mack the Knife," his most famous song and the one which brought him instant fame. The song won the Grammy for 1960's "Record of the Year" and has since become a classic. The cigarette case is signed by Atlantic Records' president, Ahmet Ertegun; Atlantic Records' vice president Miriam Bienstock; music producer Jerry Wexler; and Atlantic Records' head of jazz division, Nesuhi Ertegun.





366

367

365

364

364
A DIAMOND, BLACK ONYX, PLATINUM AND 18K ROSE GOLD RING
 center round brilliant-cut diamond
 approximately: 2.00cts; *estimated total remaining diamond weight: 1.10cts; size: 5 3/4*

\$7,000 - 10,000

366
A SET OF THREE DIAMOND AND 18K WHITE, ROSE AND YELLOW GOLD RINGS
 center emerald-cut diamonds weigh: 0.80ct, 0.82ct and 0.82ct; *size: 6 1/2*

\$6,000 - 8,000

367
A RUBY, DIAMOND AND 18K ROSE GOLD RING
total diamond weight: 1.82cts; size:6

\$3,000 - 5,000

365
A RUBY, DIAMOND AND ROSE GOLD BRACELET
estimated total diamond weight 5.50cts; length 6 3/4in., width 1 1/2in.

\$1,500 - 2,000



368



369



370



371

372

**368
A RUBY, DIAMOND AND 18K WHITE
GOLD RING**

*estimated total diamond weight: 1.20ct;
size: 6 1/2*

\$1,800 - 2,500

**369
A DIAMOND, ENAMEL AND 18K GOLD
RING, FRENCH**

*with French assay mark; estimated total
diamond weight: 1.25cts; size: 6*

\$2,200 - 2,800

**370
A PAIR OF DIAMOND, ENAMEL AND
GOLD HOOP EARRINGS**

*estimated total diamond weight: 7.35cts;
diameter: 1 1/2in.*

\$4,000 - 6,000

**PROPERTY OF A NEW MEXICO
COLLECTION**

**371
A COLLECTION OF SIX ENAMEL AND
GOLD STACKING RINGS**

size: 6

\$800 - 1,000

PROPERTY OF VARIOUS OWNERS

**372
A DIAMOND, PLATINUM AND 18K GOLD
NECKLACE**

*estimated total diamond weight: 3.10cts;
gross weight approximately: 39 grams;
length: 14 1/2in.*

\$7,000 - 9,000



373



376



374



375



377

373
A DIAMOND AND TRI-COLOR GOLD BRACELET

estimated total diamond weight: 5.00cts; gross weight approximately: 34 grams; length: 7 3/4in.

\$2,000 - 4,000

374
A DIAMOND AND 18K GOLD 'NOUVELLE VAGUE' RING, CARTIER, 1999

signed Cartier no. 63810; estimated total diamond weight: 1.10cts; size: 5 1/2

\$2,500 - 3,500

375
A PINK SAPPHIRE, ORANGE SAPPHIRE, COLORED DIAMOND AND 18K BI-COLOR GOLD CLIP/PENDANT

dimensions: 2 x 1 3/4in. (brown diamonds untested for origin of color)

\$3,000 - 5,000

376
A FANCY COLOR DIAMOND, DIAMOND AND BI-COLOR GOLD NECKLACE

square modified brilliant-cut Fancy Brown-Yellow diamond weighs: 3.02cts; length: 18in.

\$3,000 - 5,000

Accompanied by GIA report #5131137870 dated March 16, 2011, stating the diamond as: Natural Fancy Brown-Yellow.

377
A DIAMOND AND 18K TRI-COLOR GOLD RING

total diamond weight: 6.40cts; size: 6 1/2

\$6,000 - 8,000



379



378



380



381



378

A COLORED DIAMOND AND 18K GOLD RING

estimated total diamond weight: 2.45ct; size: 6 1/4 (colored diamonds untested for origin of color)

\$3,500 - 5,500

379

A LADY'S BLACK ONYX, DIAMOND AND 18K GOLD POLO STRAP WRISTWATCH, PIAGET

quartz movement; crystal, case and buckle signed Piaget, no. 8270 420686; with box and papers; diameter: 28mm.

\$2,500 - 3,500

380

A PAIR OF DIAMOND AND 18K YELLOW GOLD HOOP EARRINGS

total diamond weight: 23.66cts; diameter: 2 1/4in.

\$18,000 - 22,000

381

A PAIR OF FANCY COLOR DIAMONDS AND 18K GOLD EARCLIPS

total diamond weight: 7.84cts; dimensions: 1/2 x 1/2in.

\$3,500 - 5,500

See department for eighteen GIA Reports.



382



386



383



384



385



**382
A RUBY, DIAMOND AND 18K ROSE GOLD RING**

total diamond weight: 1.44cts; size: 7

\$2,000 - 3,000

**383
A DIAMOND AND 18K TRI-COLOR GOLD FLOWER CLIP**

estimated total diamond weight: 18.95cts; gross weight approximately: 47 grams; dimensions: 2 x 2in.

\$7,000 - 9,000

**384
A PAIR OF DIAMOND AND 18K ROSE GOLD EAR PENDANTS**

total diamond weight: 13.18cts; gross weight approximately: 25 grams; length: 1 7/8in.

\$3,000 - 5,000

**385
A DIAMOND AND 18K ROSE GOLD TWO-FINGER RING**

total diamond weight: 2.44cts; size: 6 3/4 (adjustable setting)

\$1,800 - 2,500

**386
A COLORED DIAMOND AND 18K WHITE GOLD RING**

estimated total diamond weight: 6.50cts; size: 7 1/2 (diamonds untested for origin of color)

\$1,200 - 1,500



387



388



389



390



391

392



387
A DIAMOND AND 18K ROSE GOLD HINGED CUFF
estimated total diamond weight: 2.95cts; diameter: 2 1/2in.

\$1,500 - 2,000

388
A COLORED DIAMOND, DIAMOND AND 18K GOLD RING, TREMONTI
round brilliant-cut brown diamond: 1.16cts; signed Tremonti; size: 7 (colored diamonds untested for origin of color)

\$3,500 - 4,500

389
A COLORED DIAMOND, DIAMOND AND 18K GOLD BRACELET
total diamond weight: 81.29cts; gross weight approximately: 68 grams; length: 7in. (colored diamonds untested for origin of color)

\$35,000 - 45,000

390
A DIAMOND AND 18K BI-COLOR GOLD LEAF RING
total diamond weight: 3.61cts; size: 6 1/2

\$3,500 - 5,000

391
A PAIR OF DIAMOND AND 18K ROSE GOLD FEATHER EARRINGS
total diamond weight: 2.81cts; length: 2 3/4in.

\$1,800 - 2,500

392
A COLORED DIAMOND AND 18K ROSE GOLD LONG CHAIN
estimated total diamond weight: 30.35cts; gross weight approximately: 28 grams; length: 30in. (colored diamonds untested for origin of color)

\$8,000 - 12,000



393

393
**A BLACK ONYX AND 18K GOLD
NECKLACE AND BRACELET SET,
CALGARIO, ITALIAN**
*signed Calgario, Italy; gross weight
approximately 83 grams; necklace length:
16in.; bracelet length: 7in.*

\$2,500 - 3,500



394

394^Y
**A CORAL, DIAMOND AND 18K GOLD
RING**
size: 7 3/4

\$2,000 - 3,000



395



396



398



397

395^Y
**A PAIR OF DIAMOND, COLORED
DIAMOND, CORAL AND 18K GOLD EAR
CLIPS, NICHOLAS VARNEY**
*signed Nicholas Varney; length: 1 3/4in.
(yellow diamonds untested for origin of color)*
\$3,000 - 5,000

396
**AN ENAMEL AND BI-COLOR GOLD
SWAN BROOCH/PENDANT ON 14K
GOLD OMEGA CHAIN**
*"LEDA DE TERRELENA"; gross weight
approximately: 94 grams; pendant
dimensions: 2 x 1 3/4in., chain length:
18 1/2in.*

\$2,000 - 3,000

397^Y
**A PAIR OF CORAL AND 18K GOLD
CUFFLINKS, CARTIER, 1990**
signed Cartier, no. A6158; length: 1 3/8in.
\$1,500 - 2,500

398^Y
**A BLACK ONYX, CORAL AND 18K GOLD
BRACELET, CARTIER**
signed Cartier, no. 111343; length: 7 1/2in.
\$3,500 - 4,000



402



403



401



399



400



404



405

399

A PAIR OF GARNET AND 18K GOLD MODERNIST EARRINGS

length: 2 1/2in.

\$1,200 - 1,800

400

A 22K GOLD CROSS ON LEATHER AND GOLD NECKLACE, DENISE ROBERGÉ

signed Denise Robergé; gross weight approximately: 175 grams; necklace length: 36 1/2in.; pendant dimensions: 2 1/2 x 2in.

\$4,000 - 6,000

401

A PAIR OF AMETHYST, DIAMOND AND GOLD DAY/NIGHT EAR PENDANTS

estimated total diamond weight: 9.70cts; length: 2 1/4in.

\$2,500 - 3,500

402

AN AMETHYST, DIAMOND AND GOLD RING, CARTIER

cut-cornered rectangular step-cut amethyst: 19.86 x 15.30 x 10.43mm; signed Cartier; estimated total diamond weight: 1.00ct; size 5 1/4

\$3,000 - 5,000

403

AN 18K GOLD BRACELET, CIRCA 1965

weighing approximately: 82 grams; length: 7 1/2in.

\$2,500 - 3,500

404

A PAIR OF 18K GOLD BROOCH/ PENDANTS, TIFFANY & CO.

signed Tiffany; weighing approximately: 93 grams; dimensions: 2 x 2in.

\$3,000 - 5,000

PROPERTY FROM THE ESTATE OF MAE SUE TALLEY

405

A COLLECTION OF LACQUER, 18K GOLD AND STERLING SILVER JEWELRY, ELSA PERETTI FOR TIFFANY & CO.

comprised of a sterling silver "O" pendant, a pair of sterling silver 'Bean' ear clips and a lacquer 'Eternal Circle' pendant suspended by an 18K gold chain; all signed Peretti Tiffany & Co.; chain length: 30in., earring dimension: 1 1/8 x 5/8in., pendant diameter: 1 1/2in.

\$800 - 1,200

To be sold without reserve



406



409



407



410



408



409A

PROPERTY OF VARIOUS OWNERS

406
**A PAIR OF 18K GOLD LION AND LIONESS
EAR CLIPS, MARIO BUCCELLATI,
ITALIAN, 1996**
signed M. Buccellati; dimensions: 1 1/8 x 1in.

\$3,000 - 5,000

407
**A PAIR OF RUBY, DIAMOND AND 18K
GOLD EAR CLIPS, BULGARI, ITALIAN**
*signed Bulgari, no. C1883; with Italian assay
marks; dimensions: 1 x 13/16in.*

\$2,500 - 3,500

408
A RUBY, DIAMOND AND GOLD RING
*oval mixed-cut ruby weighs: 2.10cts;
estimated total diamond weight: 1.00ct; size:
5 3/4*

\$3,000 - 5,000

Accompanied by AGL report #CS 68370,
dated June 26, 2015, stating the ruby as:
Vietnamese origin, no evidence of heat
enhancement.

409
**A PINK TOURMALINE AND 18K GOLD
NECKLACE, ELLEDUE, ITALIAN**
*signed Elledue, with Italian assay marks;
gross weight approximately: 91 grams;
length: 18in.*

\$2,500 - 3,500

409A
**A PINK TOURMALINE AND 18K GOLD
BRACELET, ELLEDUE, ITALIAN**
*signed Elledue; gross weight approximately:
50 grams; length: 7 1/2in.*

\$1,500 - 2,000

410
A RUBY, DIAMOND AND GOLD RING
*oval brilliant-cut ruby approximately: 7.32 x
5.73 x 2.60mm; size: 6 1/2*

\$2,000 - 3,000



411



413



415



412



414

411
AN AMETHYST AND 18K GOLD RING
size: 6

\$2,000 - 3,000

412
A DIAMOND AND 18K BI-COLOR GOLD CUFF, ITALIAN
estimated total diamond weight: 2.55cts;
gross weight approximately: 69 grams;
diameter: 2 1/4in.

\$2,500 - 3,500

413
AN AMETHYST, DIAMOND, PLATINUM AND 18K GOLD NECKLACE, BY PALOMA PICASSO FOR TIFFANY & CO., 1984
pear-shaped amethyst approximately: 16.70 x 13.15 x 9.91mm; signed Paloma Picasso, Tiffany & Co.; estimated diamond weight: 1.60cts; length: 15 3/4in.

\$4,000 - 6,000

414
AN AMETHYST, DIAMOND AND 18K GOLD RING, MAUBOUSSIN, PARIS
oval buff-topped mixed-cut amethyst approximately: 10.00 x 8.00 x 5.70mm; signed Mauboussin, Paris no. T51 A5989, with French assay and maker's mark; with signed box; size 5 3/4

\$1,800 - 2,500

415
A PAIR OF COLORED SAPPHIRE, DIAMOND, 18K GOLD AND PLATINUM EAR CLIPS
signed WR; estimated total diamond weight: 1.25cts; length: 1 1/4in.

\$3,500 - 4,500



416

417

418

419

420

416
A CULTURED PEARL, DIAMOND AND 18K GOLD COLLAR AND EAR CLIPS
 pearls approximately: 7.2 to 7.4mm;
estimated total diamond weight: 2.10cts;
gross weight approximately: 113 grams;
collar length: 13in., earclip length: 1 3/8in.

\$2,000 - 3,000

417
A PAIR OF CULTURED MABÉ PEARL, DIAMOND AND 18K GOLD EARRINGS, CELLINO
 pearls approximately: 18.0mm; *signed Cellino; diameter: 7/8in.*

\$1,500 - 2,500

418
A WOOD AND 18K GOLD RING, VAN CLEEF & ARPELS, FRENCH
signed VCA OR, no. 128060 with French assay and maker's marks; size: 5

\$2,000 - 3,000

419
A FANCY COLOR DIAMOND, DIAMOND, AND 14K BI-COLOR GOLD RING
 emerald-cut Fancy Light Yellow diamond
 weighs: 1.17cts; *estimated remaining diamond weight: 1.00ct; size: 7*

\$1,800 - 2,500

Accompanied by GIA report #1172624469, dated May 9, 2016, stating: Fancy Light Yellow, Natural, Uneven.

420
A DIAMOND AND 18K GOLD BRACELET
estimated total diamond weight: 5.20cts; gross weight approximately: 70 grams; length: 7in.

\$4,500 - 5,500



421



422



423



424



425

421

AN 18K GOLD NECKLACE AND EAR CLIP SET

gross weight approximately: 89 grams; necklace length: 16in; ear clip length: 13/16in.

\$2,500 - 3,500

422

A CULTURED PEARL, COLORED DIAMOND AND 18K GOLD CUFF

pearls approximately: 12.0 to 12.5mm; estimated total diamond weight: 1.15cts; gross weight approximately: 58 grams; diameter: 2 1/8in. (yellow diamonds untested for origin of color)

\$2,000 - 3,000

423

A PAIR OF CULTURED PEARL, DIAMOND, 18K GOLD AND PLATINUM EAR PENDANTS

pearls approximately: 11.9mm to 12.0mm; estimated total diamond weight: 1.10cts; length: 1in.

\$2,000 - 3,000

424

A DIAMOND AND 18K BI-COLOR GOLD CUFF

estimated total diamond weight: 1.90cts; gross weight approximately: 87 grams; diameter: 2 1/4in.

\$3,500 - 4,500

425

A DIAMOND AND 14K GOLD LINE BRACELET

estimated total diamond weight: 7.00cts; length: 7 1/2in.

\$3,000 - 5,000



426



427



428



429



430

426
AN EMERALD, DIAMOND AND BI-COLOR GOLD RING

oval cabochon emerald approximately: 14.91 x 10.76 x 7.38mm; estimated total diamond weight: 5.60cts; size: 7 1/4

\$5,000 - 7,000

427
A DIAMOND AND 14K GOLD HINGED BANGLE

estimated total diamond weight: 8.00cts; gross weight approximately: 30 grams; diameter: 2 1/2in.

\$3,000 - 5,000

428
AN EMERALD, DIAMOND AND 18K GOLD NECKLACE AND PAIR OF EAR CLIPS

estimated total diamond weight: 9.60cts; gross weight approximately: 111 grams; necklace length: 20in., ear clip length: 1 5/8in.

\$6,000 - 8,000

429
A DIAMOND AND 18K GOLD RING AND EAR CLIP SET

estimated total diamond weight: 2.05cts; gross weight approximately: 33 grams; ear clip dimensions: 7/8 x 1/2in., ring size: 7 1/2

\$2,000 - 3,000

430
A DIAMOND AND 18K GOLD HINGED BANGLE

estimated total diamond weight: 1.75cts; gross weight approximately: 56 grams; diameter: 2 1/4in.

\$2,500 - 3,500



431



436



432



435



434

433



431
AN EMERALD, DIAMOND AND 14K GOLD RING

center oval cabochon emerald approximately: 7.69 x 6.49 x 4.42mm; size: 7

\$1,500 - 2,000

432
A DIAMOND AND GEM-SET GOLD BANGLE

oval cabochon emerald and sapphire approximately: 9.0 x 7.0mm; *estimated total diamond weight: 1.80cts; diameter: 7 1/4in.*

\$2,000 - 3,000

433
A DIAMOND AND 14K GOLD BRACELET
estimated total diamond weight: 2.50cts; gross weight approximately: 42 grams; length: 7in.

\$2,500 - 3,500

434
AN EMERALD, DIAMOND AND GOLD RING
oval cabochon emerald approximately: 9.11 x 7.32 x 5.10mm; *estimated total diamond weight: 1.00ct; size: 7*

\$2,000 - 3,000

435
TWO 18K GOLD NECKLACES, ITALIAN
with Italian assay marks; gross weight approximately: 200 grams; lengths: 16in. and 18in.

\$5,000 - 7,000

436
AN EMERALD BEAD, DIAMOND AND 14K GOLD RING, TRIO
emerald approximately: 13 x 12mm; *estimated total diamond weight: 2.00cts; size: 3*

\$1,200 - 1,800



438

437

439

440

437
A DIAMOND AND WHITE GOLD LONG CHAIN

*estimated total diamond weight: 7.90cts;
 length: 33in.*

\$7,000 - 10,000

438
A PAIR OF DYED GREEN AGATE, PERIDOT, TURQUOISE, DIAMOND AND 18K GOLD EAR PENDANTS

dimensions: 2 5/8 x 1 1/2in.

\$1,500 - 2,000

439
A DIAMOND AND 18K WHITE GOLD BAND

*estimated total diamond weight: 2.10cts;
 size: 5 1/2*

\$1,200 - 1,800

440
A PAIR OF PERIDOT, DIAMOND, PLATINUM AND 18K GOLD EAR CLIPS

length: 1 3/5in.

\$2,000 - 4,000



441
A PAIR OF TURQUOISE, DIAMOND AND 18K WHITE GOLD EAR PENDANTS
total diamond weight: 1.69cts; length: 2 1/2in.
\$2,000 - 3,000

442
A TURQUOISE, ENAMEL, DIAMOND AND BI-COLOR GOLD NECKLACE
estimated total diamond weight: 10.35cts; length: 23in.
\$6,000 - 9,000

443
A DIAMOND AND WHITE GOLD RING
total diamond weight: 16.82cts; size: 9
\$6,000 - 8,000

444
A PAIR OF DIAMOND, 18K WHITE GOLD AND PLATINUM EARRINGS
estimated total diamond weight: 6.00cts; dimensions: 7/8 x 3/4in.
\$8,000 - 12,000



450



449



448



445



446



447



451



452



453



454

445

AN OPAL, DIAMOND AND 18K WHITE GOLD RING

oval cabochon opal approximately: 19.70 x 14.25 x 6.20mm; *estimated total diamond weight: 1.80cts; size: 7 1/4*

\$1,800 - 2,500

PROPERTY FROM A PARADISE VALLEY, AZ ESTATE

446

AN AQUAMARINE AND WHITE GOLD PENDANT ON A PLATINUM CHAIN

carved briolette aquamarine approximately: 50.00 x 24.00 x 15.00mm; *chain length: 18in.*

\$2,500 - 3,500

PROPERTY OF VARIOUS OWNERS

447

A DIAMOND AND PLATINUM NECKLACE

estimated total diamond weight: 7.75cts;

length: 22in.

\$4,000 - 6,000

448

A BLUE TOPAZ, DIAMOND AND 18K WHITE GOLD "LUCEA" PENDANT-NECKLACE, BULGARI, ITALIAN

signed Bulgari, Made in Italy; length: adjustable 15 to 17 1/2in.

\$4,000 - 6,000

PROPERTY FROM A PARADISE VALLEY, AZ ESTATE

449

AN OPAL, DIAMOND AND 14K WHITE GOLD PENDANT ON A 14K WHITE GOLD CHAIN

pear-shaped cabochon opal approximately: 16.70 x 11.80 x 4.00mm; *length: 16 1/4in.*

\$1,500 - 2,000

PROPERTY OF VARIOUS OWNERS

450

AN AQUAMARINE, DIAMOND AND WHITE GOLD RING

cut-cornered rectangular step-cut aquamarine approximately: 18.43 x 15.34 x 11.01mm; *size: 6*

\$2,500 - 3,500

451

A DIAMOND AND 14K WHITE GOLD RING

round brilliant-cut diamond weighs: 2.15cts;

size: 7 1/4

\$7,000 - 10,000

Accompanied by GIA report #1139964534 dated September 13, 2012, stating the diamond as: J color, VS1 clarity.

452

A DIAMOND AND PLATINUM ETERNITY BAND

estimated total diamond weight: 4.50cts; size: 6 1/2

\$2,800 - 3,500

453

A PAIR OF OPAL, DIAMOND, TANZANITE AND 18K WHITE GOLD EAR PENDANTS

triangular opals approximately: 16.00 x 17.00mm; *estimated total diamond weight: 0.90ct; length: 1 3/4in.*

\$2,000 - 3,000

454

A SAPPHIRE, DIAMOND AND PLATINUM RING

oval double cabochon sapphire approximately 14.60 x 11.86 x 7.42mm; *size 6 1/4*

\$3,000 - 5,000



455



459



456



457



458

455

A DIAMOND AND PLATINUM RING

transitional round brilliant-cut diamond approximately: 2.05cts; size: 6 3/4

\$4,000 - 6,000

456

A RUBY, DIAMOND AND PLATINUM RING

oval mixed-cut ruby weighs: 2.16cts; size: 5 3/4

\$2,500 - 3,500

Accompanied by GIA report #1196560989, dated August 15, 2018; stating: Natural Corundum, Ruby, Heated.

457

A PAIR OF DIAMOND AND 18K WHITE GOLD EAR PENDANTS

total diamond weight: 3.40cts; length: 1 7/8in.

\$2,000 - 3,000

458

A SAPPHIRE, DIAMOND AND PLATINUM RING

oval modified brilliant step-cut sapphire weighs: 3.12cts; total diamond weight: 5.80cts; size: 7 1/4

\$5,000 - 8,000

Accompanied by GIA report #3255931229 dated May 30, 2017, stating the sapphire as: Natural, Sri Lankan origin, with no indications of heat treatment.

459

AN EMERALD, DIAMOND AND 18K WHITE GOLD RING

pear modified brilliant-cut emerald weighs: 2.84cts; size: 7

\$2,500 - 3,500

Accompanied by GIA report #6193403301 dated June 5, 2018, stating the emerald as: Natural, Colombian origin, with clarity enhancement (F2).



460



462



461



463



464

460

A RUBY, DIAMOND AND PLATINUM RING

cushion mixed-cut ruby approximately: 5.67 x 5.19 x 3.20mm; size: 6 1/2

\$2,000 - 3,000

461

A RUBY, DIAMOND AND 18K WHITE GOLD ETERNITY BAND

unsigned, attributed to Damiani; size: 7 1/2

\$1,800 - 2,500

PROPERTY OF A LOS ANGELES COLLECTOR

462

A SAPPHIRE, DIAMOND AND WHITE GOLD RING

oval mixed-cut sapphire approximately: 9.02 x 7.45 x 5.46mm; size: 6

\$2,000 - 3,000

PROPERTY OF VARIOUS OWNERS

463

A DIAMOND, SAPPHIRE, EMERALD AND 18K WHITE GOLD BANGLE

total diamond weight: 1.85cts; diameter: 2 1/4in.

\$3,500 - 5,000

464

AN EMERALD, DIAMOND AND PLATINUM RING

oval double cabochon emerald weighs: 9.51cts; estimated total diamond weight: 1.35cts; size: 6

\$3,000 - 5,000

Accompanied by GIA report #2195496538, dates July 18, 2018, stating: Natural Beryl, Emerald, Zambian origin, clarity enhanced (F1).



465



466



467

465
A FANCY COLOR DIAMOND AND 14K WHITE GOLD RING
 marquise brilliant-cut Fancy Deep Brown-Yellow diamond weighs: 7.60cts; size: 6 3/4
\$15,000 - 25,000

Accompanied by GIA report #5182810101 dated January 16, 2018, stating the diamond as: Natural Fancy Deep Brown-Yellow, SI2 clarity.

466
AN EMERALD, DIAMOND AND PLATINUM RING
 square emerald-cut emerald approximately: 7.47 x 7.22 x 5.20mm; size: 5
\$4,000 - 6,000

Accompanied by AGL report #1095893 dated November 1, 2018, stating the emerald as: Natural, Colombian origin, with minor clarity enhancement.

467
A DIAMOND AND 18K WHITE GOLD NECKLACE
 center round brilliant-cut diamond approximately: 1.00ct; *estimated total remaining diamond weight: 13.80cts; length: 21in.*
\$8,000 - 11,000





468



469



470



472



471

468

A RUBY, DIAMOND AND PLATINUM RING

oval brilliant-cut ruby weighs: 1.95cts; total diamond weight: 1.26cts; size: 5 1/2

\$12,000 - 18,000

Accompanied by GRS report #2011-061503 dated June 25, 2011, stating the ruby as: Natural Vivid Red, Burmese origin.

469

A DIAMOND AND 14K WHITE GOLD 'TOI ET MOI' RING

two marquise brilliant-cut diamonds total approximately: 1.05cts; size: 6 1/2

\$1,500 - 3,000

470

A RUBY, DIAMOND AND 18K WHITE GOLD BRACELET

estimated total diamond weight: 3.35cts; gross weight approximately: 25 grams; length: 7in.

\$3,000 - 5,000

471

A CAT'S EYE CHRYSOBERYL, DIAMOND AND PLATINUM RING

oval double cabochon Cat's Eye Chrysoberyl weighs: 7.38cts; size: 7

\$2,000 - 3,000

Accompanied by GIA report #1182781830 dated October 11, 2017, stating the Cat's Eye Chrysoberyl as: Natural, with Greenish Yellow color.

472

A RUBY, DIAMOND AND PLATINUM RING

round brilliant step-cut ruby weighs: 2.32cts; size: 6 1/4

\$6,000 - 8,000

Accompanied by GIA report #2185800596 dated October 12, 2017, stating the ruby as: Natural, Burmese origin, heated (moderate residues).



473



474



475



476



477

473

A RUBY, DIAMOND AND PLATINUM RING
oval mixed-cut ruby weighs: 2.42cts; *no.* 36423; *total diamond weight:* 1.65cts; *size:* 5 3/4

\$2,500 - 3,500

Accompanied by AGL report #1095469 dated October 11, 2018, stating the ruby as: Natural, Burmese origin, no heat enhancement.

474

A RUBY, DIAMOND AND PLATINUM RING
cushion brilliant step-cut ruby weighs: 3.69cts; *size:* 6 1/2

\$2,000 - 3,000

Accompanied by GIA report #2195484952 dated July 16, 2018, stating the ruby as: Natural, heated (minor residues).

475

A DIAMOND, 14K WHITE GOLD AND PLATINUM NECKLACE

estimated total diamond weight: 3.00cts; *length:* 18 1/2in.

\$2,000 - 3,000

476

A PAIR OF DIAMOND, PLATINUM AND 18K WHITE GOLD EARRINGS
total diamond weight: 3.70cts; *diameter:* 1/4in.

\$3,000 - 5,000

477

A DIAMOND AND PLATINUM RING, VERRAGIO

old European-cut diamond weighs: 2.15cts; *signed Verragio; size:* 5

\$4,000 - 6,000



478

480

479

482

481

478
A PAIR OF DIAMOND AND 18K WHITE GOLD EAR PENDANTS
estimated total diamond weight: 1.55cts; length: 1 1/4in.

\$1,800 - 2,500

479
A RUBELLITE, DIAMOND AND PLATINUM RING
oval mixed-cut rubellite approximately: 15.00 x 12.59 x 8.07mm; size: 5

\$3,000 - 5,000

480
A SAPPHIRE, DIAMOND AND 18K WHITE GOLD RING
pear brilliant step-cut sapphire weighs: 3.46cts; size: 6 3/4

\$2,500 - 3,500

Accompanied by GIA report # 1192577452 dated August 27, 2018, stating the sapphire as: Natural, Sri Lankan origin, with heat enhancement.

481
A CULTURED PEARL, DIAMOND AND 18K WHITE GOLD NECKLACE
pearls approximately: 11.0mm to 14.0mm; estimated total diamond weight: 2.30cts; length: 18in.

\$4,000 - 6,000

482
A CULTURED PEARL, SAPPHIRE AND 18K WHITE GOLD RING
pearl approximately: 15.0mm; size: 7

\$2,000 - 4,000



483



485



486



484



487

483

A SAPPHIRE, DIAMOND AND 18K WHITE GOLD RING

oval double cabochon sapphire weighs: 10.19cts; *estimated total diamond weight: 1.45cts; size: 6 1/2*

\$1,500 - 2,500

Accompanied by GIA report #2191649582 dated September 14, 2018, stating the sapphire as: Natural, Sri Lankan origin, no indications of heat enhancement.

484

A PAIR OF DIAMOND AND 18K WHITE GOLD EAR PENDANTS

total diamond weight: 27.75cts; gross weight approximately: 33 grams; dimensions: 2 3/8 x 1 1/8in.

\$25,000 - 35,000

485

A PINK SAPPHIRE, DIAMOND AND PLATINUM RING

oval modified brilliant step-cut purplish pink sapphire weighs: 1.01cts; *estimated total diamond weight: 1.00ct; size: 7 1/2*

\$1,800 - 2,500

Accompanied by GIA report #2191432694 dated June 15, 2018, stating the Purplish Pink Sapphire as: Natural, no indications of heat enhancement.

486

AN ORANGE SPINEL, DIAMOND AND PLATINUM RING

cushion mixed-cut spinel approximately: 7.63 x 7.16 x 4.75mm; *size: 7*

\$2,000 - 3,000

487

A DIAMOND AND 18K WHITE GOLD RIVIÈRE NECKLACE

center round brilliant-cut diamond approximately: 1.00ct; *total remaining diamond weight: 11.43cts; gross weight approximately: 27 grams; length: 17in.*

\$6,500 - 7,500



488

**RHODONITE, NEPHRITE AND ROCK
CRYSTAL QUARTZ FLOWER STUDY,
GEORG WILD, IDAR-OBERSSTEIN,
GERMANY, CIRCA 1960**

height: 10in.

\$1,500 - 2,000

488

Bonhams

AUCTIONEERS SINCE 1793



Fine Jewellery

New Bond Street, London | 5 December 2018

ENQUIRIES

+44 (0) 20 7468 8284
emily.barber@bonhams.com
[bonhams.com/jewellery](https://www.bonhams.com/jewellery)

AN IMPORTANT DIAMOND RING

The step-cut diamond weighing 24.31 carats,
D colour, Internally Flawless clarity
£1,300,000 - 1,800,000 *

Bonhams

AUCTIONEERS SINCE 1793



The Art of Time

New York | December 6, 2018

INQUIRIES

+1 (212) 461 6530
jonathan.snellenburg@bonhams.com
[bonhams.com/CLK](https://www.bonhams.com/CLK)

**CARTIER. A VERY FINE PLATINUM
AND SAPPHIRE MINUTE
REPEATING POCKET WATCH
ACTIVATED VIA THE BEZEL**
\$25,000 - 30,000

Bonhams

AUCTIONEERS SINCE 1793



Post-War & Contemporary Art

New Bond Street, London | 6 March 2019

ENTRIES NOW INVITED

Closing date for entries
18 January 2019

ENQUIRIES

+44 20 7468 5837
giacomo.balsamo@bonhams.com
bonhams.com/departments/PIC-CON

KEITH HARING (1958-1990)

Untitled, 1983
ink and felt tip pen on fibreglass
Sold for £ 293,000 *

CONDITIONS OF SALE

The following Conditions of Sale, as amended by any published or posted notices or verbal announcements during the sale, constitute the entire terms and conditions on which property listed in the catalog shall be offered for sale or sold by Bonhams & Butterfields Auctioneers Corp. and any consignor of such property for whom we act as agent. If live online bidding is available for the subject auction, additional terms and conditions of sale relating to online bidding will apply; see www.bonhams.com/WebTerms for the supplemental terms. As used herein, "Bonhams," "we" and "us" refer to Bonhams & Butterfields Auctioneers Corp.

1. As used herein, the term "bid price" means the price at which a lot is successfully knocked down to the purchaser. The term "purchase price" means the aggregate of (a) the bid price, (b) a PREMIUM retained by us and payable by the purchaser EQUAL TO 25% OF THE FIRST \$250,000 OF THE BID PRICE, 20% OF THE AMOUNT OF THE BID PRICE ABOVE \$250,000 UP TO AND INCLUDING \$4,000,000, AND 12.5% OF THE AMOUNT OF THE BID PRICE OVER \$4,000,000, and (c) unless the purchaser is exempt by law from the payment thereof, any Alabama, Arizona, California, Colorado, Connecticut, Florida, Georgia, Hawaii, Illinois, Indiana, Kentucky, Maine, Massachusetts, Michigan, Minnesota, Nevada, New Jersey, New York, North Carolina, Ohio, Pennsylvania, Rhode Island, Texas, Virginia, Washington, D.C., Washington state, Wisconsin, Wyoming or other state or local sales tax (or compensating use tax) and other applicable taxes. With regard to New York sales tax, please refer to the "Sales and Use Tax" section of these Conditions of Sale.

2. On the fall of the auctioneer's hammer, the highest bidder shall have purchased the offered lot in accordance and subject to compliance with all of the conditions set forth herein and (a) assumes full risk and responsibility therefor, (b) if requested will sign a confirmation of purchase, and (c) will pay the purchase price in full or such part as we may require for all lots purchased. No lot may be transferred. Any person placing a bid as agent on behalf of another (whether or not such person has disclosed that fact or the identity of the principal) may be jointly and severally liable with the principal under any contract resulting from the acceptance of a bid.

Unless otherwise agreed, payment in good funds is due and payable within five (5) business days following the auction sale. Whenever the purchaser pays only a part of the total purchase price for one or more lots purchased, we may apply such payments, in our sole discretion, to the lot or lots we choose. Payment will not be deemed made in full until we have collected good funds for all amounts due.

Payment for purchases may be made in or by (a) cash, (b) cashier's check or money order, (c) personal check with approved credit drawn on a U.S. bank, (d) wire transfer or other immediate bank transfer, or (e) Visa, MasterCard, American Express or Discover credit, charge or debit card. A processing fee will be assessed on any returned checks. Please note that the amount of cash notes and cash equivalents that can be accepted from a given purchaser may be limited.

To the fullest extent permitted by applicable law: The purchaser grants us a security interest in the property, and we may retain as collateral security for the purchaser's obligations to us, any property and all monies held or received by us for the account of the purchaser, in our possession. We also retain all rights of a secured party under the California Commercial Code. If the foregoing conditions or any other applicable conditions herein are not complied with, in addition to all other remedies available to us and the consignor by law, we may at our election: (a) hold the purchaser liable for the full purchase price and any late charges, collection costs, attorneys' fees and costs, expenses and incidental damages incurred by us or the

consignor arising out of the purchaser's breach; (b) cancel the sale, retaining as liquidated damages all payments made by the purchaser; and/or (c) cancel the sale and/or resell the purchased property, at public auction and/or by private sale, and in such event the purchaser shall be liable for the payment of all consequential damages, including any deficiencies or monetary losses, and all costs and expenses of such sale or sales, our commissions at our standard rates, all other charges due hereunder, all late charges, collection costs, attorneys' fees and costs, expenses and incidental damages. In addition, where two or more amounts are owed in respect of different transactions by the purchaser to us, to Bonhams 1793 Limited and/or to any of our other affiliates, subsidiaries or parent companies worldwide within the Bonhams Group, we reserve the right to apply any monies paid in respect of a transaction to discharge any amount owed by the purchaser. If all fees, commissions, premiums, bid prices and other sums due to us from the purchaser are not paid promptly as provided in these Conditions of Sale, we reserve the right to impose a finance charge equal to 1.5% per month (or, if lower, the maximum nonusurious rate of interest permitted by applicable law), on all amounts due to us beginning on the 31st day following the sale until payment is received, in addition to other remedies available to us by law.

3. We reserve the right to withdraw any property and to divide and combine lots at any time before such property's auction. Unless otherwise announced by the auctioneer at the time of sale, all bids are per lot as numbered in the catalog and no lots shall be divided or combined for sale.

4. We reserve the right to reject a bid from any bidder, to split any bidding increment, and to advance the bidding in any manner the auctioneer may decide. In the event of any dispute between bidders, or in the event the auctioneer doubts the validity of any bid, the auctioneer shall have sole and final discretion either to determine the successful bidder or to re-offer and resell the article in dispute. If any dispute arises after the sale, our sales records shall be conclusive in all respects.

5. If we are prevented by fire, theft or any other reason whatsoever from delivering any property to the purchaser or a sale otherwise cannot be completed, our liability shall be limited to the sum actually paid therefor by the purchaser and shall in no event include any compensatory, incidental or consequential damages.

6. If a lot is offered subject to a reserve, we may implement such reserve by bidding on behalf of the consignor, whether by opening bidding or continuing bidding in response to other bidders until reaching the reserve. If we have an interest in an offered lot and the proceeds therefrom other than our commissions, we may bid therefor to protect such interest. **CONSIGNORS ARE NOT ALLOWED TO BID ON THEIR OWN ITEMS.**

7. All statements contained in the catalog or in any bill of sale, condition report, invoice or elsewhere as to authorship, period, culture, source, origin, measurement, quality, rarity, provenance, importance, exhibition and literature of historical relevance, or physical condition **ARE QUALIFIED STATEMENTS OF OPINION AND NOT REPRESENTATIONS OR WARRANTIES.** No employee or agent of Bonhams is authorized to make on our behalf or on that of the consignor any representation or warranty, oral or written, with respect to any property.

8. All purchased property shall be removed from the premises at which the sale is conducted by the date(s) and time(s) set forth in the "Buyer's Guide" portion of this catalog. Property designated with a "W" and associated purchased lots, if not removed promptly following sale, will be transferred to an offsite warehouse at the purchaser's risk and expense, as set forth in more detail in the "Buyer's Guide." Purchased property that is permitted to remain

onsite at Bonhams' facility should be removed at the purchaser's expense not later than 5:00 p.m. Pacific Time five (5) business days following the date of the sale. If not so removed, a storage fee of \$5.00 per lot per day will be payable to us by the purchaser beginning at the close of the 21st day following the sale, and we may thereafter transfer such property to an offsite warehouse at the purchaser's risk and expense. Accounts must be settled in full before property will be released. Packing and handling of purchased lots are the responsibility of the purchaser. Bonhams can provide packing and shipping services for certain items as noted in the "Buyer's Guide" section of the catalog.

9. The copyright in the text of the catalog and the photographs, digital images and illustrations of lots in the catalog belong to Bonhams or its licensors. You will not reproduce or permit anyone else to reproduce such text, photographs, digital images or illustrations without our prior written consent.

10. These Conditions of Sale shall bind the successors and assigns of all bidders and purchasers and inure to the benefit of our successors and assigns. No waiver, amendment or modification of the terms hereof (other than posted notices or oral announcements during the sale) shall bind us unless specifically stated in writing and signed by us. If any part of these Conditions of Sale is for any reason invalid or unenforceable, the rest shall remain valid and enforceable.

11. These Conditions of Sale and the purchaser's and our respective rights and obligations hereunder are governed by the laws of the State of California. By bidding at an auction, each purchaser and bidder agrees to be bound by these Conditions of Sale. Any dispute, controversy or claim arising out of or relating to this agreement, or the breach, termination or validity thereof, brought by or against Bonhams (but not including claims brought against the consignor by the purchaser of lots consigned hereunder) shall be resolved by the procedures set forth below.

MEDIATION AND ARBITRATION PROCEDURES

(a) Within 30 days of written notice that there is a dispute, the parties or their authorized and empowered representatives shall meet by telephone and/or in person to mediate their differences. If the parties agree, a mutually acceptable mediator shall be selected and the parties will equally share such mediator's fees. The mediator shall be a retired judge or an attorney familiar with commercial law and trained in or qualified by experience in handling mediations. Any communications made during the mediation process shall not be admissible in any subsequent arbitration, mediation or judicial proceeding. All proceedings and any resolutions thereof shall be confidential, and the terms governing arbitration set forth in paragraph (c) below shall govern.

(b) If mediation does not resolve all disputes between the parties, or in any event no longer than 60 days after receipt of the written notice of dispute referred to above, the parties shall submit the dispute for binding arbitration before a single neutral arbitrator. Such arbitrator shall be a retired judge or an attorney familiar with commercial law and trained in or qualified by experience in handling arbitrations. Such arbitrator shall make all appropriate disclosures required by law. The arbitrator shall be drawn from a panel of a national arbitration service agreed to by the parties, and shall be selected as follows: (i) If the national arbitration service has specific rules or procedures, those rules or procedures shall be followed; (ii) If the national arbitration service does not have rules or procedures for the selection of an arbitrator, the arbitrator shall be an individual jointly agreed to by the parties. If the parties cannot agree on a national arbitration service, the arbitration shall be conducted by the American Arbitration Association, and the arbitrator shall be selected in accordance with the Rules of

CONDITIONS OF SALE - CONTINUED

the American Arbitration Association. The arbitrator's award shall be in writing and shall set forth findings of fact and legal conclusions.

(c) Unless otherwise agreed to by the parties or provided by the published rules of the national arbitration service:

(i) the arbitration shall occur within 60 days following the selection of the arbitrator;

(ii) the arbitration shall be conducted in the designated location, as follows: (A) in any case in which the subject auction by Bonhams took place or was scheduled to take place in the State of New York or Connecticut or the Commonwealth of Massachusetts, the arbitration shall take place in New York City, New York; (B) in all other cases, the arbitration shall take place in the city of San Francisco, California; and

(iii) discovery and the procedure for the arbitration shall be as follows:

(A) All arbitration proceedings shall be confidential;

(B) The parties shall submit written briefs to the arbitrator no later than 15 days before the arbitration commences;

(C) Discovery, if any, shall be limited as follows: (I) Requests for no more than 10 categories of documents, to be provided to the requesting party within 14 days of written request therefor; (II) No more than two (2) depositions per party, provided however, the deposition(s) are to be completed within one (1) day; (III) Compliance with the above shall be enforced by the arbitrator in accordance with California law;

(D) Each party shall have no longer than eight (8) hours to present its position. The entire hearing before the arbitrator shall not take longer than three (3) consecutive days;

(E) The award shall be made in writing no more than 30 days following the end of the proceeding. Judgment upon the award rendered by the arbitrator may be entered by any court having jurisdiction thereof.

To the fullest extent permitted by law, and except as required by applicable arbitration rules, each party shall bear its own attorneys' fees and costs in connection with the proceedings and shall share equally the fees and expenses of the arbitrator.

LIMITED RIGHT OF RESCISSION

If within one (1) year from the date of sale, the original purchaser (a) gives written notice to us alleging that the identification of Authorship (as defined below) of such lot as set forth in the **BOLD TYPE** heading of the catalog description of such lot (as amended by any saleroom notices or verbal announcements during the sale) is not substantially correct based on a fair reading of the catalog (including the terms of any glossary contained therein), and (b) within 10 days after such notice returns the lot to us in the same condition as at the time of sale, and (c) establishes the allegation in the notice to our satisfaction (including by providing one or more written opinions by recognized experts in the field, as we may reasonably require), then the sale of such lot will be rescinded and, unless we have already paid to the consignor monies owed him in connection with the sale, the original purchase price will be refunded.

If, prior to receiving such notice from the original purchaser alleging such defect, we have paid the consignor monies owed him in connection with the sale, we shall pay the original purchaser the amount of our commissions, any other sale proceeds to which we are entitled and applicable taxes received from the purchaser on the sale and make demand on the consignor to pay the balance of the original purchase price to the original purchaser. Should the consignor fail to pay such amount promptly, we may disclose the identity of the consignor and assign to the original purchaser our rights against the consignor with respect to the lot the sale of which is sought to be rescinded. Upon such disclosure and assignment, any liability of Bonhams as consignor's agent with respect to said lot shall automatically terminate.

The foregoing limited right of rescission is available to the original purchaser only and may not be assigned to or relied upon by any subsequent transferee of the property sold. The purchaser hereby accepts the benefit of the consignor's warranty of title and other representations and warranties made by the consignor for the purchaser's benefit. Nothing in this section shall be construed as an admission by us of any representation of fact, express or implied, obligation or responsibility with respect to any lot. **THE PURCHASER'S SOLE AND EXCLUSIVE**

REMEDY AGAINST BONHAMS FOR ANY REASON WHATSOEVER IS THE LIMITED RIGHT OF RESCISSION DESCRIBED IN THIS SECTION.

"Authorship" means only the identity of the creator, the period, culture and source or origin of the lot, as the case may be, as set forth in the **BOLD TYPE** heading of the print catalog entry. The right of rescission does not extend to: (a) works of art executed before 1870 (unless these works are determined to be counterfeits created since 1870), as this is a matter of current scholarly opinion which can change; (b) titles, descriptions, or other identification of offered lots, which information normally appears in lower case type below the **BOLD TYPE** heading identifying the Authorship; (c) Authorship of any lot where it was specifically mentioned that there exists a conflict of specialist or scholarly opinion regarding the Authorship of the lot at the time of sale; (d) Authorship of any lot which as of the date of sale was in accordance with the then generally-accepted opinion of scholars and specialists regarding the same; or (e) the identification of periods or dates of creation in catalog descriptions which may be proven inaccurate by means of scientific processes that are not generally accepted for use until after publication of the catalog in which the property is offered or that were unreasonably expensive or impractical to use at the time of such publication.

LIMITATION OF LIABILITY

EXCEPT AS EXPRESSLY PROVIDED ABOVE, ALL PROPERTY IS SOLD "AS IS." NEITHER BONHAMS NOR THE CONSIGNOR MAKES ANY REPRESENTATION OR WARRANTY, EXPRESS OR IMPLIED, AS TO THE MERCHANTABILITY, FITNESS OR CONDITION OF THE PROPERTY OR AS TO THE CORRECTNESS OF DESCRIPTION, GENUINENESS, ATTRIBUTION, PROVENANCE OR PERIOD OF THE PROPERTY OR AS TO WHETHER THE PURCHASER ACQUIRES ANY COPYRIGHTS OR OTHER INTELLECTUAL PROPERTY RIGHTS IN LOTS SOLD OR AS TO WHETHER A WORK OF ART IS SUBJECT TO THE ARTIST'S MORAL RIGHTS OR OTHER RESIDUAL RIGHTS OF THE ARTIST. THE PURCHASER EXPRESSLY ACKNOWLEDGES AND AGREES THAT IN NO EVENT SHALL BONHAMS BE LIABLE FOR ANY DAMAGES INCLUDING, WITHOUT LIMITATION, ANY COMPENSATORY, INCIDENTAL OR CONSEQUENTIAL DAMAGES.

SELLER'S GUIDE

SELLING AT AUCTION

Bonhams can help you every step of the way when you are ready to sell art, antiques and collectible items at auction. Our regional offices and representatives throughout the US are available to service all of your needs. Should you have any further questions, please visit our website at www.bonhams.com/us for more information or call our Client Services Department at +1 (323) 850 7500.

AUCTION ESTIMATES

The first step in the auction process is to determine the auction value of your property. Bonhams' world-renowned specialists will evaluate your special items at no charge and in complete confidence. You can obtain an auction estimate in many ways:

- Attend one of our Auction Evaluation Events held regularly at our galleries and in other major metropolitan areas. The updated schedule for Bonhams Auction Evaluation Events is available at www.bonhams.com/us.
- Call our Client Services Department to schedule a private appointment at one of our galleries. If you have a large collection, our specialists can travel, by appointment, to evaluate your property on site.
- Send clear photographs to us of each individual item, including item dimensions and other pertinent information with each picture. Photos should be sent to Bonhams' address in envelopes marked

as "photo auction estimate". Alternatively, you can submit your request using our online form at www.bonhams.com/us. Digital images may be attached to the form. Please limit your images to no more than five (5) per item.

CONSIGNING YOUR PROPERTY

After you receive an estimate, you may consign your property to us for sale in the next appropriate auction. Our staff assists you throughout the process, arranging transportation of your items to our galleries (at the consignor's expense), providing a detailed inventory of your consignment, and reporting the prices realized for each lot. We provide secure storage for your property in our warehouses and all items are insured throughout the auction process. You will receive payment for your property approximately 35 days after completion of sale.

Sales commissions vary with the potential auction value of the property and the particular auction in which the property is offered. Please call us for commission rates.

PROFESSIONAL APPRAISAL SERVICES

Bonhams' specialists conduct insurance and fair market value appraisals for private collectors, corporations, museums, fiduciaries and government entities on a daily basis. Insurance appraisals, used for insurance purposes, reflect the cost of replacing property in today's retail market. Fair market value appraisals are used for estate,

tax and family division purposes and reflect prices paid by a willing buyer to a willing seller.

When we conduct a private appraisal, our specialists will prepare a thorough inventory listing of all your appraised property by category. Valuations, complete descriptions and locations of items are included in the documentation.

Appraisal fees vary according to the nature of the collection, the amount of work involved, the travel distance, and whether the property is subsequently consigned for auction.

Our appraisers are available to help you anywhere and at any time. Please call our Client Services Department to schedule an appraisal.

ESTATE SERVICES

Since 1865, Bonhams has been serving the needs of fiduciaries – lawyers, trust officers, accountants and executors – in the disposition of large and small estates. Our services are specially designed to aid in the efficient appraisal and disposition of fine art, antiques, jewelry, and collectibles. We offer a full range of estate services, ranging from flexible financial terms to tailored accounting for heirs and their agents to world-class marketing and sales support.

For more information or to obtain a detailed Trust and Estates package, please visit our website at www.bonhams.com/us or contact our Client Services Department.

BUYER'S GUIDE

BIDDING & BUYING AT AUCTION

Whether you are an experienced bidder or an enthusiastic novice, auctions provide a stimulating atmosphere unlike any other. Bonhams previews and sales are free and open to the public. As you will find in these directions, bidding and buying at auction is easy and exciting. Should you have any further questions, please visit our website at www.bonhams.com or call our Client Services Department at +1 (323) 850 7500.

Catalogs

Before each auction we publish illustrated catalogs that include dates and times for previews and auctions. Our catalogs also provide descriptions and estimated values for each "lot." A lot may refer to a single item or to a group of items auctioned together. We offer our catalogs by subscription or by single copy. For information on subscribing to our catalogs, you may refer to the subscription form in this catalog, call our Client Services Department, or visit our website at www.bonhams.com/us.

Previews

Auction previews are your chance to inspect each lot prior to the auction. We encourage you to look closely and examine each object on which you may want to bid so that you will know as much as possible about it. Items are sold "as is" and with all faults; illustrations in our catalogs, website and other materials are provided for identification only. At the previews, our staff is always available to answer your questions and guide you through the auction process. Condition reports may be available upon request.

Estimates

Bonhams catalogs include estimates for each lot, exclusive of buyer's premium and tax. The estimates are provided as an approximate guide to current market value and should not be interpreted as a representation or prediction of actual selling prices. They are determined well in advance of a sale and are subject to revision. Please contact us should you have any questions about value estimates.

Reserves

All lots in a catalog are subject to a reserve unless otherwise indicated. The reserve is the minimum price that the seller is willing to accept for a lot. This amount is confidential and does not exceed the low estimated value.

BIDDING AT AUCTION

At Bonhams, you can bid in many ways: in person, via absentee bid, over the phone, or via Bonhams' online bidding facility. Absentee bids can be submitted in person, online, via fax or via email.

A valid Bonhams client account is required to participate in bidding activity. You can obtain registration information online, at the reception desk or by calling our Client Services Department.

By bidding at auction, whether in person or by agent, by absentee bid, telephone, online or other means, the buyer or bidder agrees to be bound by the Conditions of Sale.

Lots are auctioned in consecutive numerical order as they appear in the catalog. Bidding normally begins below the low estimate. The auctioneer will accept bids from interested parties present in the saleroom, from telephone bidders, and from absentee bidders who have left written bids in advance of the sale. The auctioneer may also execute bids on behalf of the consignor up to the amount of the reserve, but never above it.

We assume no responsibility for failure to execute bids for any reason whatsoever.

In Person

If you are planning to bid at auction, you will need to register at the reception desk in order to receive a numbered bid card. To place a bid, hold up your card so that the auctioneer can clearly see it. Decide on the maximum amount that you wish to pay, exclusive of buyer's premium and tax, and continue bidding until your bid prevails or you reach your limit. If you are the successful bidder on a lot, the auctioneer will acknowledge your paddle number and bid amount.

Absentee Bids

As a service to those wishing to place bids, we may at our discretion accept bids without charge in advance of sale by telephone, by facsimile or in writing on bidding forms available from us. "Buy" bids will not be accepted; all bids must state the highest bid price the bidder is willing to pay. Our auction staff will try to bid just as you would, with the goal of obtaining the

item at the lowest bid price possible. In the event identical bids are submitted, the earliest bid submitted will take precedence. Absentee bids shall be executed in competition with other auction participants. A friend or agent may place bids on your behalf, provided that we have received your written authorization prior to the sale. Absentee bid forms are available in our catalogs, online at www.bonhams.com/us, and at our San Francisco, Los Angeles and New York galleries.

By Telephone

Under special circumstances, we can arrange for you to bid by telephone. To arrange for a telephone bid, please contact our Client Services Department a minimum of 24 hours prior to the sale.

Online

Web users may place absentee bids online from anywhere in the world. To bid online, please visit our website at www.bonhams.com/us.

We are pleased to make our live online bidding facility available to bidders in this sale.

Additional terms and conditions of sale relating to online bidding will apply. Please see www.bonhams.com/25097 or contact the Client Services Department to obtain information and learn how you can register and bid online in this sale.

Bid Increments

Bonhams generally uses the following increment multiples as bidding progresses:

\$50-200	by \$10s
\$200-500	by \$20/50/80s
\$500-1,000	by \$50s
\$1,000-2,000	by \$100s
\$2,000-5,000	by \$200/500/800s
\$5,000-10,000	by \$500s
\$10,000-20,000	by \$1,000s
\$20,000-50,000	by \$2,000/5,000/8,000s
\$50,000-100,000	by \$5,000s
\$100,000-200,000	by \$10,000s
above \$200,000	at auctioneer's discretion

The auctioneer may split or reject any bid at any time at his or her discretion as outlined in the Conditions of Sale.

Currency Converter

Solely for the convenience of bidders, a currency converter may be provided at Bonhams sales. The rates quoted for conversion of other currencies to U.S. Dollars are indications only and should not be relied upon by a bidder, and neither Bonhams nor its agents shall be responsible for any errors or omissions in the operation or accuracy of the currency converter.

Buyer's Premium

A buyer's premium is added to the winning bid price of each individual lot purchased, at the rates set forth in the Conditions of Sale. The winning bid price plus the premium constitute the purchase price for the lot. Applicable sales taxes are computed based on this figure, and the total becomes your final purchase price.

Unless specifically illustrated and noted, fine art frames are not included in the estimate or purchase price. Bonhams accepts no liability for damage or loss to frames during storage or shipment.

All sales are final and subject to the Conditions of Sale found in our catalogs, on our website, and available at the reception desk.

Payment

All buyers are asked to pay and pick up by 3pm on the business day following the auction. Payment may be made to Bonhams by cash, checks drawn on a U.S. bank, money order, wire transfer, or by Visa, MasterCard, American Express or Discover credit or charge card or debit card. All items must be paid for within 5 business days of the sale. Please note that payment by personal or business check may result in property not being released until purchase funds clear our bank.

Sales Tax

Residents of states listed in Paragraph 1 of the Conditions of Sale must pay applicable sales tax. Other state or local taxes (or compensation use taxes) may apply. Sales tax will be automatically added to the invoice unless a valid resale number has been furnished or the property is shipped via common carrier to destinations outside the states listed in

the Conditions of Sale. If you wish to use your resale license please contact Cashiers for our form.

Shipping & Removal

Bonhams can accommodate shipping for certain items. Please contact our Cashiers Department for more information or to obtain a quote. Refer to Conditions of Sale for special terms governing the shipment of Arms and Wine. Shipments are made during weekday business hours up to four weeks after payment is received. Carriers are not permitted to deliver to P.O. Boxes.

International buyers are responsible for all import/export customs duties and taxes. An invoice stating the actual purchase price(s) will accompany all international purchases.

Simultaneous sale property collection notice:

If this sale previews in multiple cities, please see the title page for details regarding final location of property for collection.

Auction Results

Auction results are usually available on the next business day following the sale or online at www.bonhams.com/us.

CONTACTS

OFFICERS

Malcolm Barber
Co-Chairman

Matthew Girling
Chief Executive Officer

Laura King Pfaff •
Chairman Emeritus

Leslie Wright
Deputy Chairman Vice President,
Trusts and Estates

Vice Presidents, Specialists
Rupert Banner
Mark Fisher
Dessa Goddard
Jeremy Goldsmith
Jakob Greisen
Bruce MacLaren
Scot Levitt
Mark Osborne
Brooke Sivo
Catherine Williamson

REPRESENTATIVES

Arizona

Terri Adrian-Hardy, (602) 859 1843

California

David Daniel
(916) 364 1645, Central Valley

California

Brooke Sivo
(760) 350 4255, Palm Springs
(760) 567 1744, San Diego

Chicago

Natalie B. Waechter, (773) 267 3300

Colorado

Lance Vigil
(720) 355 3737, Denver

Florida

April Matteini, (305) 978 2459
Alexis Cronin Butler, (305) 878 5366

Georgia

Mary Moore Bethea, (404) 842 1500 •

Illinois

Natalie B. Waechter, (773) 267 3300

Massachusetts/New England

Amy Corcoran, (617) 742 0909

Nevada

David Daniel, (775) 831 0330

New Mexico

Terri Adrian-Hardy, (602) 859 1843

Oregon and Idaho

Sheryl Acheson, (971) 727 7797

Texas, Oklahoma and Louisiana

texas@bonhams.com

Virginia and Washington DC

Mid-Atlantic Region

Gertraud Hechl, (202) 422 2733 •

Washington

Heather O'Mahony, (206) 566 3913

Canada, Toronto, Ontario

Kristin Kearney, (416) 462 9004 •

Montreal, Quebec

David Kelsey, (514) 894 1138 •

BONHAMS *

NEW YORK DEPARTMENTS

580 Madison Avenue
New York, New York 10022
(212) 644 9001

Books & Manuscripts

Ian Ehling, (212) 644 9094
Darren Sutherland, (212) 461 6531

Chinese Works of Art & Paintings

Bruce MacLaren, (917) 206 1677
Ming Hua, (646) 837 8132
Harold Yeo, (917) 206 1628 •

Collectors' Motorcars & Motorcycles

Rupert Banner, (212) 461 6515
Eric Minoff, (917) 206 1630
Evan Ide, (917) 340 4657
Michael Caimano, (929) 666 2243

American Art

Jennifer Jacobsen, (917) 206 1699
Elizabeth Goodridge, (917) 206 1621

Contemporary Art

Jeremy Goldsmith, (917) 206 1656
Jacqueline Towers-Perkins,
(212) 644 9039

European Paintings

Madalina Lazen, (212) 644 9108

Impressionist & Modern Art

Caitlyn Pickens, (212) 644 9135

Himalayan Art

Mark Rasmussen, (917) 206 1688

Japanese Works of Art

Jeff Olson, (212) 461 6516

Jewelry

Caroline Morrissey, (212) 644 9046
Camille Barbier, (212) 644 9035

Modern Decorative Arts & Design

Benjamin Walker, (212) 710 1306
Dan Tolson, (917) 206 1611

Photographs

Laura Paterson, (917) 206 1653

Prints and Multiples

Deborah Ripley, (212) 644 9059

Russian Fine & Decorative Arts

Yelena Harbick, (212) 644 9136

Trusts & Estates

Sherri Cohen, (917) 206 1671

Watches & Clocks

Jonathan Snellenburg, (212) 461 6530

CLIENT SERVICES DEPARTMENT

San Francisco

(415) 861 7500
(415) 861 8951 fax

Monday - Friday, 9am to 5pm

Los Angeles

(323) 850 7500
(323) 850 6090 fax

Monday - Friday, 9am to 5pm

BONHAMS *

SAN FRANCISCO DEPARTMENTS

220 San Bruno Avenue
San Francisco California 94103
(415) 861 7500

20th Century Fine Art

Sonja Moro, (415) 503 3412

Books & Manuscripts

Adam Stackhouse, (415) 503 3266

Chinese Works of Art

Dessa Goddard, (415) 503 3333
Henry Kleinhenz, (415) 503 3336
Daniel Hersksee, (415) 503 3271
Lingling Shang, (415) 503 3207 •
Amelia Chao, (415) 503 3397

Furniture & Decorative Arts

Caroline Cole, (415) 503 3400

Jewelry & Watches

Shannon Beck, (415) 503 3306

Collectors' Motorcars & Motorcycles

Mark Osborne, (415) 503 3353
Jakob Greisen, (415) 503 3284

Museum Services

Laura King Pfaff, (415) 503 3210

Native American Art

Ingmars Lindbergs, (415) 503 3393

California & Western

Paintings & Sculpture

Aaron Bastian, (415) 503 3241

Prints & Photographs

Morisa Rosenberg, (415) 503 3259

Space History

Adam Stackhouse, (415) 503 3266

Wine

Christine Ballard, (415) 503 3221

Trusts & Estates

Victoria Richardson, (415) 503 3207
Celeste Smith, (415) 503 3214

BONHAMS *

LOS ANGELES DEPARTMENTS

7601 W. Sunset Boulevard
Los Angeles California 90046
(323) 850 7500

20th Century Decorative Arts & Design

Angela Past, (323) 436 5422
Jason Stein, (323) 436 5466

Post-War & Contemporary Art

Alexis Chompaisal, (323) 436 5469

Asian Works of Art

Rachel Du, (323) 436 5587

African, Oceanic & Pre-Columbian Art

Fredric W. Backlar, (323) 436 5416 •

Books & Manuscripts

Catherine Williamson, (323) 436 5442

Coins & Banknotes

Paul Song, (323) 436 5455

Impressionist & Modern Art

Kathy Wong, (323) 436 5415

Entertainment Memorabilia

Catherine Williamson, (323) 436 5442
Dana Hawkes, (978) 283 1518

Jewelry & Watches

Dana Ehrman, (323) 436 5407
Alexis Vourvoulis, (323) 436 5483

Collectors' Motorcars & Motorcycles

Michael Caimano, (929) 666 2243

Prints & Photographs

Morisa Rosenberg, (323) 436 5435

Natural History

Thomas E. Lindgren, (310) 469 8567 •
Claudia Florian, G.J.G., (323) 436 5437 •

California & Western

Paintings & Sculpture

Scot Levitt, (323) 436 5425
Kathy Wong, (323) 436 5415

European Paintings

Mark Fisher, (323) 436 5488
Rocco Rich, (323) 436 5410

Trusts & Estates

Leslie Wright, (323) 436 5408
Joseph Francaviglia, (323) 436 5443

* Indicates saleroom
• Indicates independent contractor

Auction Registration Form

(Attendee / Absentee / Online / Telephone Bidding)

Please circle your bidding method above.

--	--	--	--

Paddle number (for office use only)

General Notice: This sale will be conducted in accordance with Bonhams Conditions of Sale, and your bidding and buying at the sale will be governed by such terms and conditions. Please read the Conditions of Sale in conjunction with the Buyer's Guide relating to this sale and other published notices and terms relating to bidding. Payment by personal or business check may result in your property not being released until purchase funds clear our bank. Checks must be drawn on a U.S. bank.

Notice to Absentee Bidders: In the table below, please provide details of the lots on which you wish to place bids at least 24 hours prior to the sale. Bids will be rounded down to the nearest increment. Please refer to the Buyer's Guide in the catalog for further information relating to instructions to Bonhams to execute absentee bids on your behalf. Bonhams will endeavor to execute bids on your behalf but will not be liable for any errors or non-executed bids.

Notice to First Time Bidders: New clients are requested to provide photographic proof of ID - passport, driving license, ID card, together with proof of address - utility bill, bank or credit card statement etc. Corporate clients should also provide a copy of their articles of association / company registration documents, together with a letter authorizing the individual to bid on the company's behalf. Failure to provide this may result in your bids not being processed. For higher value lots you may also be asked to provide a bankers reference.

Notice to online bidders; If you have forgotten your username and password for www.bonhams.com, please contact Client Services.

If successful

- I will collect the purchases myself
- Please contact me with a shipping quote (if applicable)
- I will arrange a third party to collect my purchase(s)

Please email or fax the completed Registration Form and requested information to:

Bonhams Client Services Department
7601 W. Sunset Blvd
Los Angeles, California 90046
Tel +1 (323) 850 7500
Fax +1 (323) 850 6090
bids.us@bonhams.com

Bonhams

Sale title: California Jewels		Sale date: Tuesday December 17, 2018	
Sale no. 25097		Sale venue: Los Angeles	
General Bid Increments:			
\$10 - 200by 10s		\$10,000 - 20,000by 1,000s	
\$200 - 500by 20 / 50 / 80s		\$20,000 - 50,000by 2,000 / 5,000 / 8,000s	
\$500 - 1,000by 50s		\$50,000 - 100,000by 5,000s	
\$1,000 - 2,000by 100s		\$100,000 - 200,000by 10,000s	
\$2,000 - 5,000by 200 / 500 / 800s		above \$200,000at the auctioneer's discretion	
\$5,000 - 10,000by 500s		The auctioneer has discretion to split any bid at any time.	
Customer Number		Title	
First Name		Last Name	
Company name (to be invoiced if applicable)			
Address			
City		County / State	
Post / Zip code		Country	
Telephone mobile		Telephone daytime	
Telephone evening		Fax	
Telephone bidders: indicate primary and secondary contact numbers by writing ① or ② next to the telephone number.			
E-mail (in capitals) _____			
By providing your email address above, you authorize Bonhams to send you marketing materials and news concerning Bonhams and partner organizations. Bonhams does not sell or trade email addresses.			
I am registering to bid as a private client <input type="checkbox"/>		I am registering to bid as a trade client <input type="checkbox"/>	
Resale: please enter your resale license number here _____ We may contact you for additional information.			

SHIPPING	
Shipping Address (if different than above):	
Address: _____	Country: _____
City: _____	Post/ZIP code: _____

Please note that all telephone calls are recorded.

Type of bid (A-Absentee, T-Telephone)	Lot no.	Brief description (In the event of any discrepancy, lot number and not lot description will govern.) If you are bidding online there is no need to complete this section.	MAX bid in US\$ (excluding premium and applicable tax) Emergency bid for telephone bidders only*

You instruct us to execute each absentee bid up to the corresponding bid amount indicated above.

* Emergency Bid: A maximum bid (exclusive of Buyer's Premium and tax) to be executed by Bonhams only if we are unable to contact you by telephone or should the connection be lost during bidding.

BY SIGNING THIS FORM YOU AGREE THAT YOU HAVE READ AND UNDERSTAND OUR CONDITIONS OF SALE AND SHALL BE LEGALLY BOUND BY THEM, AND YOU AGREE TO PAY THE BUYER'S PREMIUM, ANY APPLICABLE TAXES, AND ANY OTHER CHARGES MENTIONED IN THE BUYER'S GUIDE OR CONDITIONS OF SALE. THIS AFFECTS YOUR LEGAL RIGHTS.	
Your signature: _____	Date: _____





Bonhams
7601 W. Sunset Boulevard
Los Angeles, California 90046

+1 323 850 7500
bonhams.com

AUCTIONEERS SINCE 1793